

Weekly Equity Market Update

Highest coupon p.a.^{1,2a}

CH listed	Sector	Coupon p.a. (WoW)	
Zur Rose	Retail	24.75%	-1%
ams-OSRAM	Semiconductors	22.15%	0%
Credit Suisse	Banks	21.60%	-11%
Idorsia	Biotechnology	21.55%	-8%
Temenos	Software	20.90%	-5%
Dufry	Retail	14.05%	-5%
Bachem	Biotechnology	13.90%	1%
VAT	Metal Fabricate/Hardware	13.10%	0%
Straumann	Healthcare-Products	12.85%	5%
Meyer Burger Technology	Energy Sources	12.65%	6%
Logitech International	Computers	12.10%	-7%
Adecco	Commercial Service	11.95%	0%
Swissquote	Financial Services	11.80%	-3%
Richemont	Retail	11.75%	-2%

Highest relative coupon change^{1,2a}

Company	Sector	Coupon p.a. (WoW)	
EFG International	Financial Services	1.85%	19%
Basilea Pharmaceutica	Biotechnology	4.05%	8%
Meyer Burger Technology	Energy Sources	12.65%	6%
Kuehne + Nagel	Transportation	10.60%	5%
Straumann	Healthcare-Products	12.85%	5%
Kudelski	Software	4.35%	4%
GAM	Financial Services	5.90%	4%
Bucher Industries	Machinery-Diversified	6.60%	3%
dormakaba Holding AG	Electronics	9.75%	3%
EMS-Chemie	Chemicals	7.75%	1%
Bachem	Biotechnology	13.90%	1%
Forbo	Building Materials	5.90%	1%
ams-OSRAM	Semiconductors	22.15%	0%
VAT	Metal Fabricate/Hardware	13.10%	0%

EU listed	Sector	Coupon p.a. (WoW)	
TUI	Leisure Time	30.35%	3%
Casino Guichard	Food	29.00%	-26%
Atos	Computers	28.00%	-3%
Delivery Hero	Internet	27.50%	8%
MorphoSys	Biotechnology	27.30%	19%
Telecom Italia SpA/Milano	Telecommunication	25.50%	1%
Varta	Electrical Goods	25.15%	-2%
HelloFresh	Food	24.20%	-4%
Just Eat	Internet	24.10%	-4%
CECONOMY	Retail	23.05%	29%
AP Moller - Maersk	Transportation	21.25%	1%
Ubisoft Entertainment	Software	20.45%	-1%
thyssenkrupp	Iron/Steel	19.65%	-5%
TeamViewer	Software	19.30%	-3%

Company	Sector	Coupon p.a. (WoW)	
Buzzi Unicem	Building Materials	10.40%	145%
Valneva	Biotechnology	5.25%	36%
CECONOMY	Retail	23.05%	29%
Atlantia	Commercial Service	4.00%	19%
MorphoSys	Biotechnology	27.30%	19%
QIAGEN	Healthcare-Products	9.00%	13%
Remy Cointreau	Beverages	8.50%	12%
Piraeus Financials	Banks	2.80%	10%
Fortescue Metals	Iron/Steel	13.70%	10%
Public Power	Electric	5.45%	8%
Delivery Hero	Internet	27.50%	8%
Hellenic Telecommunications	Telecommunication	1.40%	8%
JUMBO	Retail	1.50%	7%
Eurobank Ergasias	Banks	1.50%	7%

US listed	Sector	Coupon p.a. (WoW)	
Beyond Meat	Food	44.50%	1%
Novavax	Biotechnology	37.30%	-3%
Digital World	Holding Companies	37.25%	-2%
Canopy Growth	Pharmaceuticals	33.75%	1%
Peloton Interactive	Leisure Time	33.10%	-1%
Coinbase Global	Financial Services	31.70%	-4%
Bausch Health	Pharmaceuticals	31.10%	-2%
Wayfair	Internet	30.30%	-5%
Bilibili	Software	30.05%	-1%
Farfetch	Internet	29.55%	-2%
Melco Resorts & Entertainment	Lodging	29.40%	4%
Lucid	Auto Manufacturers	28.30%	-4%
XPeng	Auto Manufacturers	27.80%	-2%
Grab	Internet	27.55%	-1%

Company	Sector	Coupon p.a. (WoW)	
iQIYI	Internet	27.15%	45%
Petroleo Brasileiro	Oil&Gas	27.45%	39%
ManpowerGroup	Commercial Service	9.00%	11%
Li Auto	Auto Manufacturers	26.80%	5%
GoPro	Electronics	17.00%	5%
Itau Unibanco	Banks	10.35%	5%
Baidu	Internet	17.55%	4%
Melco Resorts & Entertainment	Lodging	29.40%	4%
Alibaba	Internet	17.70%	4%
JD.com	Internet	18.25%	4%
Las Vegas Sands	Lodging	17.55%	4%
Hello	Internet	22.05%	4%
Meta Platforms Inc	Internet	16.30%	3%
Newmont	Mining	12.15%	3%

¹ Universe: All underlyings within the derivate universe.

^{2a} Structure: 1y BRC (SSPA Designation: 1230), strike at 100%, continuous barrier at 70%, guaranteed coupon, domestic ccy. Pricings as of 31.10.2022.

^{2b} Structure: 1y Autocallable Multi BRC (SSPA Designation: 1230), quarterly AC first after 6 months, strike at 100%, continuous barrier at 70%, guaranteed coupon. Pricings as of 31.10.2022.

Weekly returns⁴

CH largest movers	Ticker	WoW
Idorsia	IDIA SE	16.62%
Logitech International	LOGN SE	10.46%
Swisscom	SCMN SE	8.58%
UBS	UBSG SE	5.98%
Holcim	HOLN SE	5.90%
Clariant	CLN SE	-4.49%
EMS-Chemie	EMSN SE	-5.23%
Kudelski	KUD SE	-6.48%
Bachem	BANB SE	-10.74%
Credit Suisse	CSGN SE	-12.89%

EU largest movers	Ticker	WoW
Danske Bank	DANSKE DC	21.41%
OMV	OMV AV	15.93%
Just Eat	TKWY NA	15.20%
Casino Guichard	CO FP	15.00%
SGL Carbon	SGL GY	13.62%
SSAB	SSABA SS	-7.03%
Standard Chartered	STAN LN	-7.09%
Air France-KLM	AF FP	-11.43%
AIXTRON	AIXA GY	-11.99%
Fortescue Metals	FMG AT	-12.34%

US largest movers	Ticker	WoW
Canopy Growth	CGC UW	31.80%
Snap	SNAP UN	29.90%
Dexcom	DXCM UW	26.33%
WeWork	WE UN	24.88%
Teladoc Health	TDOC UN	22.97%
Edwards Lifesciences	EW UN	-16.44%
Cleveland-Cliffs	CLF UN	-17.69%
Bilibili	BILI UW	-19.00%
Li Auto	LI UW	-19.75%
Meta Platforms Inc	META UW	-23.70%

Further Sample baskets^{2a}

Financial Services (CHF)	Coupon p.a.
UBS Group	
Julius Bär	16.80%
Partners Group	

Manufact. & Equip. (CHF)	Coupon p.a.
Logitech	
OC Oerlikon	19.10%
VAT Group	

Mixed (CHF)	Coupon p.a.
ABB	
Novartis	12.75%
Richemont	

Telecommunication (EUR)	Coupon p.a.
Vodafone	
Orange	15.30%
Telefonica	

Utilities (EUR)	Coupon p.a.
E.ON	
RWE	16.10%
ENGIE	

Insurance (EUR)	Coupon p.a.
Allianz	
Axa	11.30%
Zurich	

US Tech (USD)	Coupon p.a.
Amazon	
Apple	20.95%
Nvidia	

Oil and Natural Gas (USD)	Coupon p.a.
BP	
Halliburton	19.45%
Schlumberger	

Pharma (USD)	Coupon p.a.
Gilead Sciences	
Merck & Co (US)	12.20%
Pfizer	

Sector heatmap (WoW returns)^{1,4}

Banks 1.87%	Retail 4.24%	Healthcare-Products 0.34%	Auto Manufacturers 0.87%
Internet 1.60%	Computers 3.23%	Semiconductors 2.48%	Biotechnology 5.55%
Software 2.49%	Pharmaceuticals 5.94%	Chemicals 1.10%	Telecommunication 4.65%
Food 4.46%	Oil&Gas 1.97%	Insurance 2.93%	Financial Services 5.40%

Most simulated single underlyings and baskets on deritrade⁵

Underlyings ^{1,2b}	Coupon p.a.
Credit Suisse	21.60%
S&P 500	5.50%
SMI	3.55%
Euro Stoxx 50	6.30%
Meta Platforms Inc	16.30%
Roche	4.25%
Novartis	3.45%
Tesla	19.55%
adidas	13.55%
BP	10.10%
Nestle	3.20%
Logitech International	12.10%
Amazon	11.90%
Apple	9.05%
NASDAQ 100	6.65%
AXA	9.30%
Swisscom	3.95%
Alphabet	9.30%
Alibaba	17.70%
Microsoft	8.60%
Straumann	12.85%

Basket 1 ^{2a} (CHF)	Coupon p.a.
Nestlé	
Novartis	7.35%
Roche	

Basket 2 ^{2a} (CHF)	Coupon p.a.
SMI	
S&P 500	7.05%
Euro Stoxx 50	

Basket 3 ^{2a} (CHF)	Coupon p.a.
Swiss Life	
Swiss Re	13.05%
Zurich Insurance	

Basket 4 ^{2a} (CHF)	Coupon p.a.
Microsoft	
Amazon	14.75%
Google	

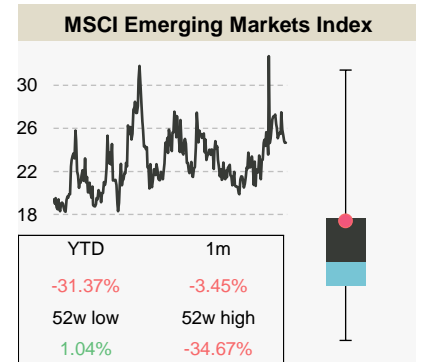
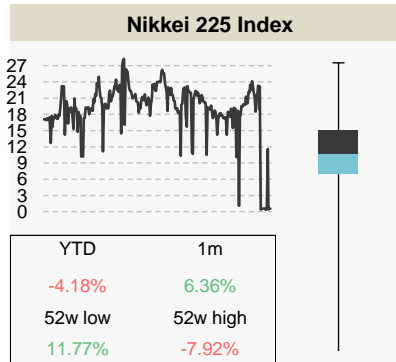
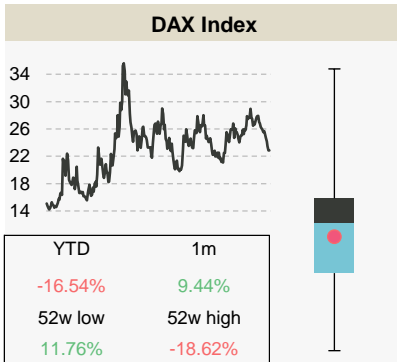
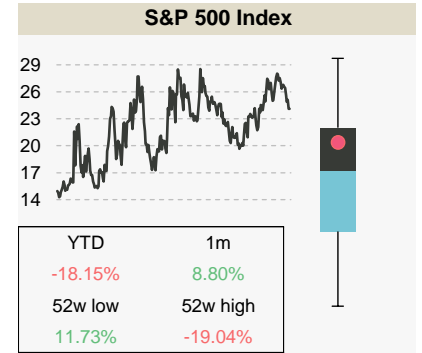
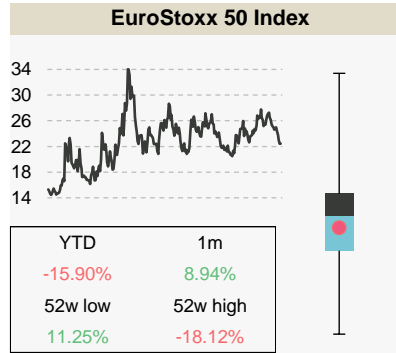
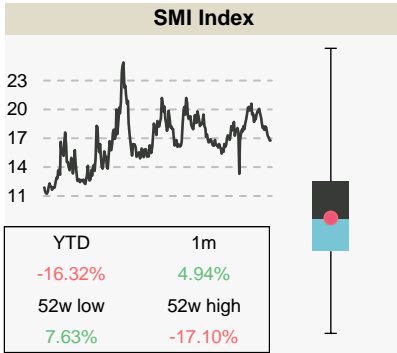
2a Structure: 1y Multi Barrier Reverse Convertible (SSPA: 1230), strike at 100%, continuous barrier at 70%, guaranteed coupon. Pricings as of 31.10.2022.

2b Structure: 1y Barrier Reverse Convertible (SSPA: 1230), strike at 100%, continuous barrier at 70%, guaranteed coupon, domestic ccy. Pricings as of 31.10.2022.

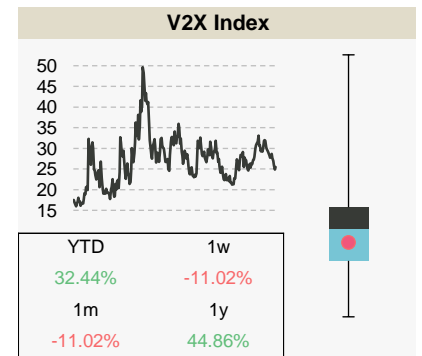
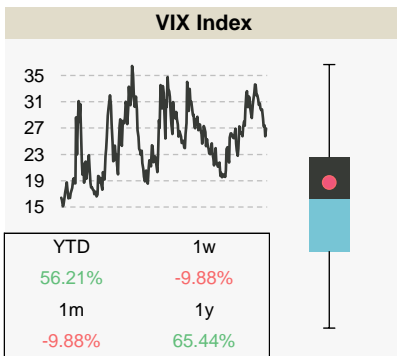
4 Week over week return calculated on the closing prices as of 31.10.2022.

5 Most simulated underlyings / Baskets on deritrade between 24.10.2022 and 28.10.2022.

Index overview (3m imp. Vol)^{6,7,8}



Market volatility overview (3m imp. Vol)^{6,8}



Sample baskets²

Index Basket 1 (USD)	Coupon p.a.
Euro Stoxx 50	9.05%
Hang Seng	
S&P 500	

Index Basket 2 (CHF)	Coupon p.a.
CAC 40	6.45%
DAX	
FTSE MIB	

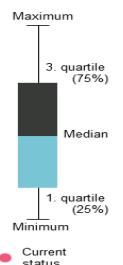
Calculations by Vontobel, source for stock information, implied volatility, dividends and returns: Bloomberg as of 31.10.2022. Note: Past performance is not a reliable indicator of future developments.

² Structure: 1y Multi Barrier Reverse Convertible (SSPA: 1230), strike at 100%, continuous barrier at 70%, guaranteed coupon. Pricings as of 31.10.2022.

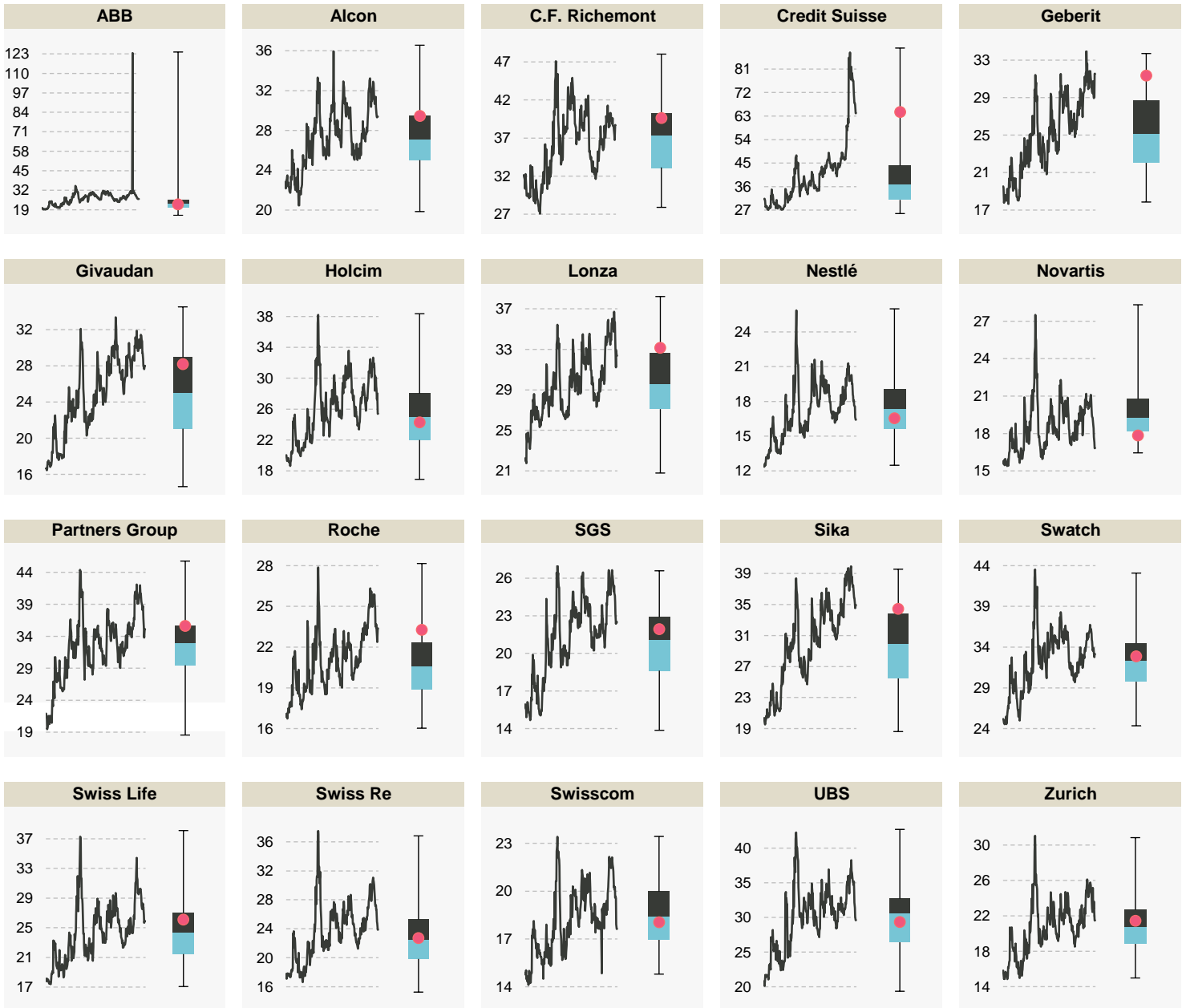
⁶ Volatilities as of period between 01.11.2021 and 31.10.2022.

⁷ Boxplot calculations are based on a rolling 12 month observation of 3 month implied volatilities.

⁸ Numbers in the boxes are referring to the performance of the underlying indices.

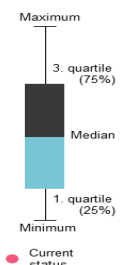


SMI components (3 imp. Vol)^{6,7}



⁶ Volatilities as of period between 01.11.2021 and 31.10.2022.

⁷ Boxplot calculations are based on a rolling 12 month observation of 3 month implied volatilities.



This publication is deemed to be marketing material within the meaning of Article 68 of the Swiss Financial Services Act and is provided for informational purposes only. We will be happy to provide you with additional information about the specified financial products, such as the prospectus or the basic information sheet, free of charge, at any time. This publication was produced by the Structured Solutions & Treasury organizational unit of our institute and is not the result of a financial analysis. The "Directives on the Independence of Financial Research" issued by the Swiss Bankers Association do not apply to the present publication. Contents of this publication originating from other Vontobel organizational units or third parties are cited as such. Performance achieved in the past may not be understood as an indication or guarantee of future performance. This publication and the financial products it presents are not intended for individuals subject to a place of jurisdiction that limits or prohibits the sale of financial products or the dissemination of this publication or the information contained therein. All information is provided without guarantee. This publication is solely for informational purposes, does not represent an investment recommendation or investment consulting, and does not contain an offer or a solicitation of an offer. It does not replace the qualified consultation necessary before any purchase decision, particularly with respect to all associated risks. Structured products are not considered collective total investments in the sense of the Swiss Federal Act on Collective Investment Schemes (CISA) and are thus not subject to the approval and oversight of the Swiss Financial Market Supervisory Authority FINMA. The recoverability of structured products may be dependent not only on the development of the underlying but also on the creditworthiness of the issuer. Investors are subject to the default risk of the issuer/guarantor. October 2022 ©Bank Vontobel AG. All rights reserved.