

Weekly Equity Market Update

Highest coupon p.a.^{1,2b}

CH listed	Sector	Coupon p.a.(WoW) ³		
Idorsia	Pharmaceuticals	17.62%	3%	
Dufry	Retail	16.31%	-3%	
ams	Semiconductors	15.35%	0%	
VAT Group	Metal Fabricate	14.48%	-3%	
Temenos	Software	12.71%	-6%	
Logitech	Computers	11.54%	3%	
Partners Group	Financial Services	11.39%	-8%	
Richemont	Retail	10.68%	-6%	
Credit Suisse	Banks	10.16%	-4%	
Aryzta	Food	9.84%	13%	
Kuehne + Nagel	Transportation	9.61%	4%	
Straumann	Healthcare-Products	9.58%	0%	
UBS Group	Banks	9.42%	1%	
Sonova Holding	Healthcare-Products	9.16%	5%	

Highest relative coupon change^{1,2b}

Company	Sector	Coupon p.a.(WoW) ³		
Baloise Holding	Insurance	4.94%	31%	
Aryzta	Food	9.84%	13%	
Swiss Life Holding	Insurance	8.50%	10%	
LafargeHolcim	Building Materials	7.74%	5%	
Sonova Holding	Healthcare-Products	9.16%	5%	
Roche Holding	Pharmaceuticals	4.37%	4%	
Kuehne + Nagel	Transportation	9.61%	4%	
Zurich Insurance	Insurance	5.86%	4%	
OC Oerlikon	Machinery-Diversified	7.20%	3%	
Idorsia	Pharmaceuticals	17.62%	3%	
Logitech	Computers	11.54%	3%	
Julius Baer	Financial Services	9.14%	3%	
ABB	Machinery	7.81%	2%	
Novartis	Pharmaceuticals	3.16%	2%	

EU listed	Sector	Coupon p.a.(WoW) ³		
thyssenkrupp	Iron/Steel	18.22%	2%	-
ProSiebenSat.1 Media SE	Media	17.04%	1%	
ArcelorMittal	Iron/Steel	16.80%	-2%	
Salzgitter	Iron/Steel	16.28%	0%	
Deutsche Lufthansa	Airlines	16.05%	0%	
Air France-KLM	Airlines	15.46%	-2%	
Zalando SE	Retail	15.41%	3%	
K+S	Chemicals	14.91%	2%	
Societe Generale	Banks	14.88%	6%	
UniCredit	Banks	14.74%	7%	
Wacker Chemie	Chemicals	14.73%	2%	
Electricite de France	Electric	14.55%	9%	
Commerzbank	Banks	14.35%	-4%	
Deutsche Bank	Banks	14.00%	0%	

Company	Sector	Coupon p.a.(WoW) ³		
Vallourec	Metal Fabricate	3.12%	83%	-
Ericsson	Telecommunication	8.50%	78%	
Bilfinger SE	Engineering	7.43%	36%	
Volvo AB	Auto Manufacturers	6.41%	12%	
Intesa Sanpaolo	Banks	12.00%	12%	
Banco Santander	Banks	12.01%	9%	
Electricite de France	Electric	14.55%	9%	
Credit Agricole	Banks	12.81%	8%	
Siemens	Misc. Manufacturing	9.60%	7%	
UniCredit	Banks	14.74%	7%	
Allianz SE	Insurance	8.18%	7%	
LANXESS	Chemicals	10.47%	7%	
Societe Generale	Banks	14.88%	6%	
Vinci	Engineering	9.14%	6%	

US listed	Sector	Coupon p.a.(WoW) ³		
BlackBerry	Computers	25.12%	-1%	
Snap	Internet	23.99%	-3%	
Devon Energy	Oil&Gas	23.00%	4%	
Alcoa	Mining	22.17%	2%	
Tesla	Auto Manufacturers	21.68%	-5%	
MACY'S	Retail	21.45%	-1%	
Spotify	Internet	19.76%	-3%	
Alibaba	Internet	19.71%	-4%	
Twitter	Internet	19.29%	-3%	
TripAdvisor	Internet	18.84%	-7%	
NVIDIA	Semiconductors	18.46%	-10%	
JD.com	Internet	18.04%	-4%	
Freeport-McMoRan	Mining	17.67%	-5%	
Baidu	Internet	17.21%	-3%	

Company	Sector	Coupon p.a.(WoW) ³		
Gilead Sciences	Biotechnology	9.65%	6%	
Pfizer	Pharmaceuticals	9.98%	4%	
Halliburton Co	Oil&Gas Services	16.00%	4%	
Devon Energy	Oil&Gas	23.00%	4%	
ABBVIE	Pharmaceuticals	5.94%	3%	
Alcoa	Mining	22.17%	2%	
General Electric Co	Misc. Manufacturing	11.89%	2%	
CHIPOTLE MEXICAN GRILL	Retail	9.38%	1%	
IBM	Computers	9.02%	1%	
Intel	Semiconductors	12.05%	0%	
Biogen	Biotechnology	12.60%	0%	
Newmont Mining	Mining	11.96%	0%	
BlackBerry	Computers	25.12%	-1%	
HP	Computers	12.63%	-1%	

¹ Universe: All underlyings within the deritrade universe.

^{2a} Structure: 1y Autocallable Multi BRC (SSPA Designation: 1230), quarterly AC first after 6 months, strike at 100%, continuous barrier at 70%, guaranteed coupon. Pricings as of 21.02.2022.

^{2b} Structure: 1y Autocallable BRC (SSPA Designation: 1230), quarterly AC first after 3 months, strike at 100%, continuous barrier at 75%, guaranteed coupon, domestic ccy. Pricings as of 21.02.2022.

³ Week over week coupon comparison / chart illustrates the historic coupon development since 14 February 2022.

Weekly returns⁴

CH largest movers	Ticker	WoW
Straumann	STMN SE	2.17%
Givaudan	GIVN SE	1.03%
Swatch	UHR SE	0.63%
Adecco Group	ADEN SE	0.58%
Novartis	NOVN SE	0.56%
Logitech	LOGN SE	-5.62%
ams	AMS SE	-5.66%
Basilea Pharmaceutica	BSLN SE	-7.28%
Schindler Holding	SCHP SE	-8.31%
Temenos	TEMN SE	-10.89%

EU largest movers	Ticker	WoW
Commerzbank	CBK GY	7.87%
AstraZeneca	AZN LN	7.49%
Kering	KER FP	6.70%
Vallourec	VK FP	6.85%
Carrefour	CA FP	5.96%
Volvo AB	VOLVB SS	-5.23%
Deutsche Post	DPW GY	-5.53%
Michelin	ML FP	-7.60%
Vallourec	VK FP	-7.88%
Ericsson	ERICB SS	-17.47%

US largest movers	Ticker	WoW
Alcoa	AA UN	6.37%
Cisco Systems	CSCO UW	6.14%
Newmont Mining	NEM UN	5.97%
Union Pacific	UNP UN	5.18%
Coca-Cola Co/The	KO UN	3.73%
ORACLE	ORCL UN	-6.50%
Adobe Systems	ADBE UW	-6.63%
3M CO	MMM UN	-7.47%
MORGAN STANLEY	MS UN	-8.75%
PayPal	PYPL UW	-10.10%

Further Sample baskets^{2a}

Financial Services (CHF)	Coupon p.a.
UBS Group	
Julius Bär	16.50%
Partners Group	

Manufact. & Equip. (CHF)	Coupon p.a.
Logitech	
OC Oerlikon	19.15%
VAT Group	

Mixed (CHF)	Coupon p.a.
ABB	
Novartis	11.38%
LafargeHolcim	

Telecommunication (EUR)	Coupon p.a.
Orange	
Telefonica	10.95%
Vodafone	

Utilities (EUR)	Coupon p.a.
E.ON	
RWE	12.82%
ENGIE	

Insurance (EUR)	Coupon p.a.
Allianz	
Axa	12.51%
Zurich	

US Tech (USD)	Coupon p.a.
Amazon	
Apple	20.72%
Nvidia	

Oil and Natural Gas (USD)	Coupon p.a.
BP	
Halliburton	19.07%
Schlumberger	

Pharma (USD)	Coupon p.a.
Gilead Sciences	
Merck & Co (US)	14.98%
Pfizer	

Sector heatmap (WoW returns)^{1,4}

Banks -2.64%	Oil&Gas -2.21%	Insurance -1.69%	Biotechnology -3.60%
Pharmaceuticals 0.13%	Retail -0.89%	Semiconductors -1.86%	Financial Services -0.58%
Internet -3.05%	Telecommunication -1.39%	Mining 1.31%	Transportation -1.76%
Chemicals -0.11%	Auto Manufacturers -0.63%	Food 2.33%	Commercial Services -1.73%

Most simulated single underlyings and baskets on deritrade⁵

Underlyings ^{1,2b}	Coupon p.a.
DAX	5.55%
Clariant	8.05%
AXA	10.39%
S&P 500	6.42%
Tesla	21.68%
NVIDIA	18.46%
SMI	2.73%
Straumann	9.58%
Credit Suisse	10.16%
Meta Platforms	14.42%
Enel	7.41%
Nestle	0.33%
BASF SE	8.63%
BMW	11.19%
Euro Stoxx Banks	9.89%
Temenos	12.71%
Volkswagen	12.35%
BNP Paribas	12.70%
Alibaba	19.71%
UBS	9.42%
adidas	9.80%

Basket 1 ^{2a} (CHF)	Coupon p.a.
SMI	
S&P 500	7.37%
Euro Stoxx 50	

Basket 2 ^{2a} (CHF)	Coupon p.a.
Nestlé	
Novartis	6.50%
Roche	

Basket 3 ^{2a} (CHF)	Coupon p.a.
Swiss Life	
Swiss Re	11.00%
Zurich	

Basket 4 ^{2a} (CHF)	Coupon p.a.
Amazon	
Google	12.96%
Microsoft	

¹ Universe: All underlyings within the deritrade universe.

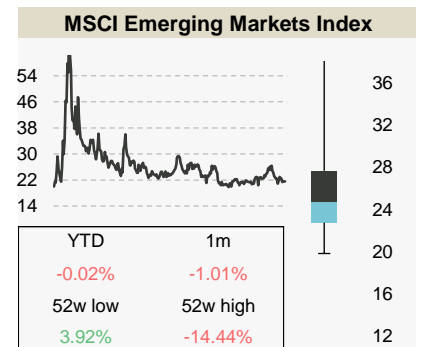
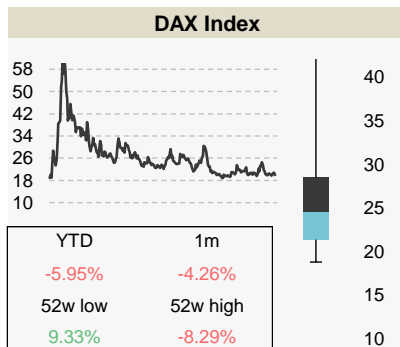
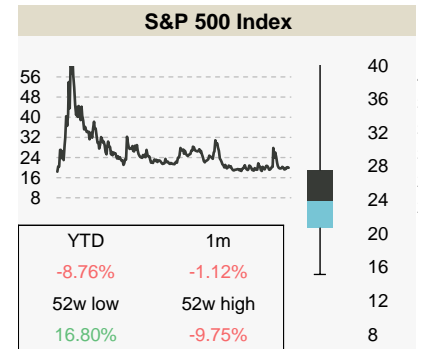
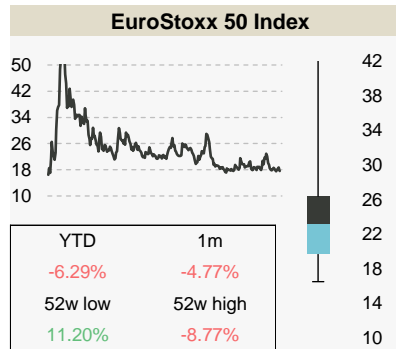
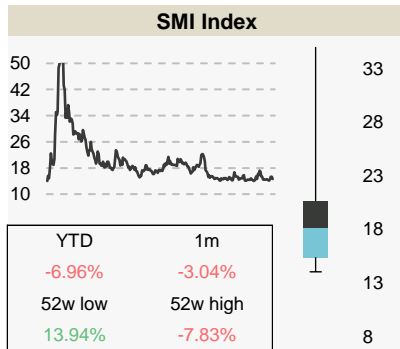
^{2a} Structure: 1y Autocallable Multi Barrier Reverse Convertible (SSPA: 1230), quarterly AC first after 6 months, strike at 100%, continuous barrier at 70%, guaranteed coupon. Pricings as of 21.02.2022.

^{2b} Structure: 1y Autocallable Barrier Reverse Convertible (SSPA: 1230), quarterly AC first after 3 months, strike at 100%, continuous barrier at 75%, guaranteed coupon, domestic ccy. Pricings as of 21.02.2022.

⁴ Week over week return calculated on the closing prices as of 18 February 2022.

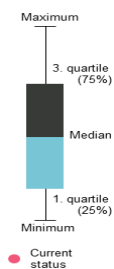
⁵ Most simulated underlyings / Baskets on deritrade between 14 February 2022 and 18 February 2022.

Index overview (3m imp. Vol)^{6,7,8}



Sample baskets²

Index Basket 1 (USD)	Coupon p.a.	Index Basket 2 (CHF)	Coupon p.a.
Euro Stoxx 50	9.51%	CAC 40	7.33%
Hang Seng		DAX	
S&P 500		FTSE MIB	



Calculations by Vontobel, source for stock information, implied volatility, dividends and returns: Bloomberg as of 21.02.2022. Note: Past performance is not a reliable indicator of future developments.

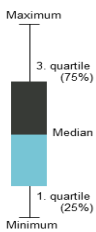
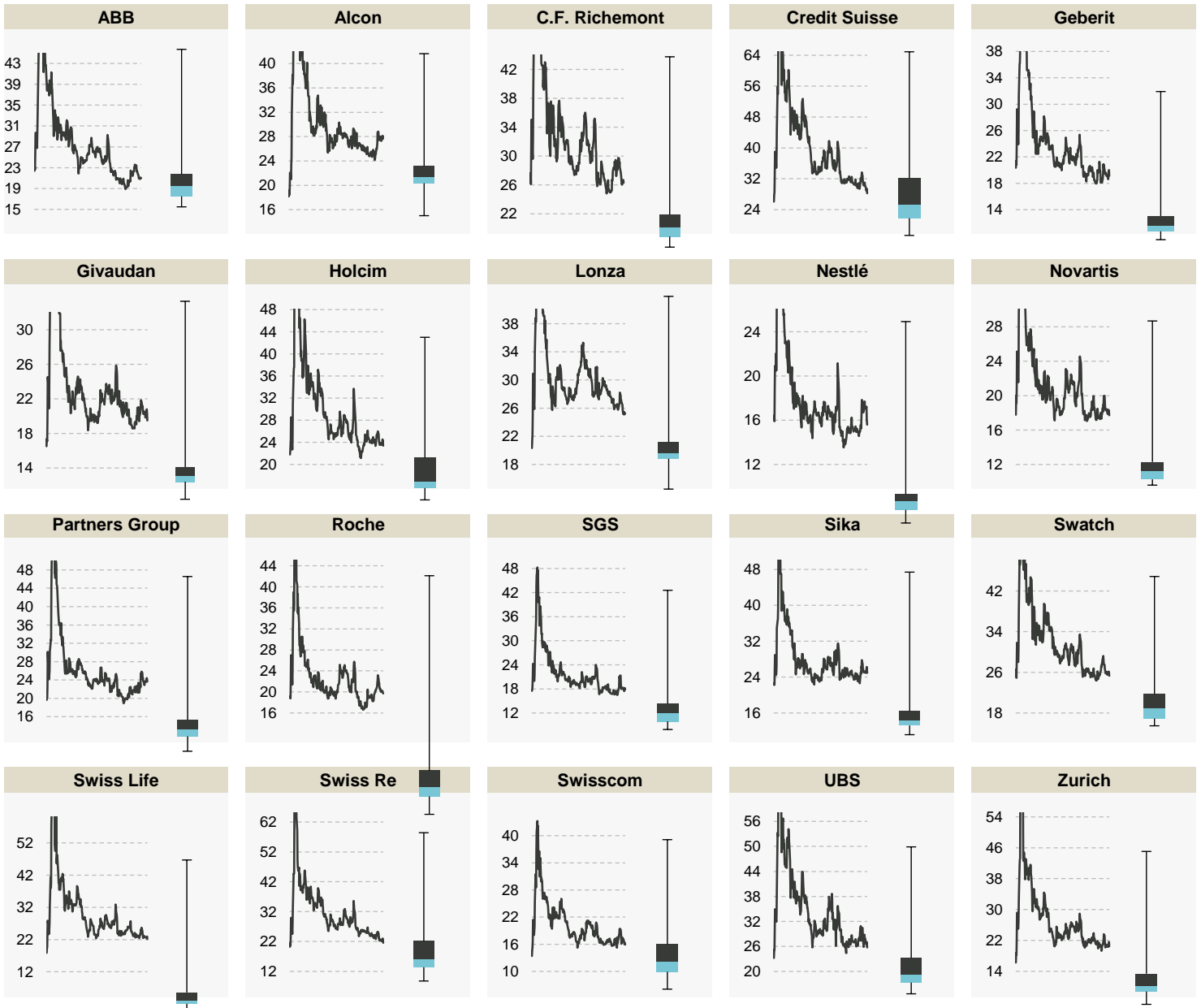
² Structure: 1y Autocallable Multi Barrier Reverse Convertible (SSPA: 1230), quarterly AC first after 6 months, strike at 100%, continuous barrier at 70%, guaranteed coupon. Pricings as of 21.02.2022.

⁶ Volatilities as of period between 23.02.2021 and 21.02.2022.

⁷ Boxplot calculations are based on a rolling 12 month observation of 3 month implied volatilities.

⁸ Numbers in the boxes are referring to the performance of the underlying indices.

SMI components (3 imp. Vol)^{6,7}



● Current status

⁶ Volatilities as of period between 23.02.2021 and 21.02.2022.

⁷ Boxplot calculations are based on a rolling 12 month observation of 3 month implied volatilities.

This publication is deemed to be marketing material within the meaning of Article 68 of the Swiss Financial Services Act and is provided for informational purposes only. We will be happy to provide you with additional information about the specified financial products, such as the prospectus or the basic information sheet, free of charge, at any time. This publication was produced by the Financial Products & Distribution organizational unit of our institute and is not the result of a financial analysis. The "Directives on the Independence of Financial Research" issued by the Swiss Bankers Association do not apply to the present publication. Contents of this publication originating from other Vontobel organizational units or third parties are cited as such. Performance achieved in the past may not be understood as an indication or guarantee of future performance. This publication and the financial products it presents are not intended for individuals subject to a place of jurisdiction that limits or prohibits the sale of financial products or the dissemination of this publication or the information contained therein. All information is provided without guarantee. This publication is solely for informational purposes, does not represent an investment recommendation or investment consulting, and does not contain an offer or a solicitation of an offer. It does not replace the qualified consultation necessary before any purchase decision, particularly with respect to all associated risks. Structured products are not considered collective total investments in the sense of the Swiss Federal Act on Collective Investment Schemes (CISA) and are thus not subject to the approval and oversight of the Swiss Financial Market Supervisory Authority FINMA. The recoverability of structured products may be dependent not only on the development of the underlying but also on the creditworthiness of the issuer. Investors are subject to the default risk of the issuer/guarantor.

February 2022 ©Bank Vontobel AG. All rights reserved

Bank Vontobel AG

Gotthardstrasse 43, 8022 Zürich
Switzerland