

## Weekly Equity Market Update

### Highest coupon p.a.<sup>1,2b</sup>

CH listed	Sector	Coupon p.a. (WoW) <sup>3</sup>		
ams	Semiconductors	15.06%	-5%	
Dufry	Retail	13.07%	-10%	
Aryzta	Food	10.83%	-13%	
Temenos	Software	8.86%	-8%	
Logitech	Computers	7.77%	-8%	
Credit Suisse	Banks	6.52%	-17%	
Vifor Pharma	Pharmaceuticals	5.88%	-17%	
Idorsia	Pharmaceuticals	5.28%	-13%	
Swatch	Retail	5.23%	0%	
UBS Group	Banks	5.20%	-15%	
Julius Baer	Financial Services	5.06%	-23%	
Richemont	Retail	4.84%	-22%	
VAT Group	Metal Fabricate	4.83%	-16%	
LafargeHolcim	Building Materials	4.33%	-19%	

### Highest relative coupon change<sup>1,2b</sup>

Company	Sector	Coupon p.a. (WoW) <sup>3</sup>		
Swatch	Retail	5.23%	0%	
ams	Semiconductors	15.06%	-5%	
Temenos	Software	8.86%	-8%	
Logitech	Computers	7.77%	-8%	
Dufry	Retail	13.07%	-10%	
Idorsia	Pharmaceuticals	5.28%	-13%	
Aryzta	Food	10.83%	-13%	
Kuehne + Nagel	Transportation	2.98%	-14%	
UBS Group	Banks	5.20%	-15%	
Sonova Holding	Healthcare-Products	3.68%	-15%	
VAT Group	Metal Fabricate	4.83%	-16%	
Partners Group	Financial Services	3.77%	-16%	
Vifor Pharma	Pharmaceuticals	5.88%	-17%	
Credit Suisse	Banks	6.52%	-17%	

EU listed	Sector	Coupon p.a. (WoW) <sup>3</sup>		
ArcelorMittal	Iron/Steel	14.63%	-7%	
Air France-KLM	Airlines	14.62%	-8%	
thyssenkrupp	Iron/Steel	14.23%	-11%	
K+S	Chemicals	14.09%	20%	
Salzgitter	Iron/Steel	12.87%	2%	
Deutsche Lufthansa	Airlines	11.98%	-10%	
ABN AMRO Group NV	Banks	11.57%	-8%	
Zalando SE	Retail	11.56%	-1%	
Electricite de France	Electric	11.25%	-12%	
UniCredit	Banks	10.92%	7%	
Deutsche Bank	Banks	10.63%	-4%	
ING Groep NV	Banks	10.40%	-12%	
Commerzbank	Banks	10.35%	-9%	
Volkswagen	Auto Manufacturers	10.23%	-9%	

Company	Sector	Coupon p.a. (WoW) <sup>3</sup>		
AstraZeneca	Pharmaceuticals	1.81%	54%	
Nokia OYJ	Telecommunication	9.27%	28%	
Sanofi	Pharmaceuticals	2.23%	27%	
K+S	Chemicals	14.09%	20%	
Orange	Telecommunication	3.41%	16%	
Unilever NV	Cosmetics	2.31%	16%	
HOCHTIEF	Engineering	10.04%	16%	
UniCredit	Banks	10.92%	7%	
Bayer	Pharmaceuticals	6.71%	5%	
Siemens	Misc. Manufacturing	5.85%	3%	
Koninklijke Philips NV	Electronics	4.46%	3%	
Industria de Diseno Textil	Retail	4.97%	2%	
Salzgitter	Iron/Steel	12.87%	2%	
Mediaset	Media	6.99%	1%	

US listed	Sector	Coupon p.a. (WoW) <sup>3</sup>		
BlackBerry	Computers	33.42%	37%	
Tesla	Auto Manufacturers	19.06%	-12%	
Alcoa	Mining	18.55%	-3%	
TripAdvisor	Internet	17.43%	-2%	
Devon Energy	Oil&Gas	16.87%	-5%	
MACY'S	Retail	16.87%	-10%	
Snap	Internet	16.76%	-6%	
Freeport-McMoRan	Mining	15.46%	-10%	
Biogen	Biotechnology	15.43%	-1%	
Twitter	Internet	14.00%	0%	
Halliburton Co	Oil&Gas Services	12.95%	-	
Teva	Pharmaceuticals	12.78%	-6%	
Petroleo Brasileiro	Oil&Gas	12.47%	-13%	
FORD MOTOR CO	Auto Manufacturers	12.29%	18%	

Company	Sector	Coupon p.a. (WoW) <sup>3</sup>		
Coca-Cola Co/The	Beverages	1.15%	140%	
AT&T	Telecommunication	2.59%	81%	
BlackBerry	Computers	33.42%	37%	
CVS HEALTH	Pharmaceuticals	3.07%	3%	
ABBVIE	Pharmaceuticals	3.87%	3%	
Twitter	Internet	14.00%	0%	
Biogen	Biotechnology	15.43%	-1%	
NIKE	Apparel	5.54%	-1%	
TripAdvisor	Internet	17.43%	-2%	
Alcoa	Mining	18.55%	-3%	
NVIDIA	Semiconductors	11.33%	-4%	
Merck & Co	Pharmaceuticals	2.22%	-5%	
Devon Energy	Oil&Gas	16.87%	-5%	
Boeing Co/The	Aerospace	9.17%	-5%	

<sup>1</sup> Universe: All underlyings within the deritrade universe.

<sup>2a</sup> Structure: 1y Autocallable Multi BRC (SSPA Designation: 1230), quarterly AC first after 6 months, strike at 100%, continuous barrier at 70%, guaranteed coupon. Pricings as of 31.05.2021.

<sup>2b</sup> Structure: 1y Autocallable BRC (SSPA Designation: 1230), quarterly AC first after 3 months, strike at 100%, continuous barrier at 75%, guaranteed coupon, domestic ccy. Pricings as of 31.05.2021.

<sup>3</sup> Week over week coupon comparison / chart illustrates the historic coupon development since 20 April 2021.

## Weekly returns<sup>4</sup>

CH largest movers	Ticker	WoW
Logitech	LOGN SE	10.46%
Richemont	CFR SE	9.85%
Aryzta	ARYN SE	9.45%
Swatch	UHR SE	8.29%
VAT Group	VACN SE	6.93%
Nestle	NESN SE	0.71%
Basilea Pharmaceutica	BSLN SE	0.63%
Clariant	CLN SE	0.51%
Novartis	NOVN SE	-0.14%
Swisscom	SCMN SE	-0.27%

EU largest movers	Ticker	WoW
K+S	SDF GY	15.17%
Airbus SE	AIR FP	9.36%
Deutsche Post	DPW GY	7.29%
Porsche	PAH3 GY	5.58%
ArcelorMittal	MT NA	5.42%
Bilfinger SE	GBF GY	-3.27%
RWE	RWE GY	-4.20%
Fresenius	FRE GY	-4.47%
Royal Dutch Shell	RDSA NA	-4.69%
Bayer	BAYN GY	-7.73%

US largest movers	Ticker	WoW
BlackBerry	BB UN	18.19%
Alcoa	AA UN	9.77%
Snap	SNAP UN	9.73%
TripAdvisor	TRIP UW	9.23%
FORD MOTOR CO	F UN	9.00%
Merck & Co	MRK UN	-4.16%
Amgen	AMGN UW	-5.21%
Biogen	BIIB UW	-5.55%
Teva	TEVA UN	-5.63%
HP	HPQ UN	-7.68%

## Further Sample baskets<sup>2a</sup>

Financial Services (CHF)	Coupon p.a.
UBS Group	
Julius Bär	9.75%
Partners Group	

Manufact. & Equip. (CHF)	Coupon p.a.
Logitech	
OC Oerlikon	10.56%
VAT Group	

Mixed (CHF)	Coupon p.a.
ABB	
Novartis	7.60%
LafargeHolcim	

Telecommunication (EUR)	Coupon p.a.
Orange	
Telefonica	7.27%
Vodafone	

Utilities (EUR)	Coupon p.a.
E.ON	
RWE	8.40%
ENGIE	

Insurance (EUR)	Coupon p.a.
Allianz	
Axa	7.68%
Zurich	

US Tech (USD)	Coupon p.a.
Amazon	
Apple	12.98%
Nvidia	

Oil and Natural Gas (USD)	Coupon p.a.
BP	
Halliburton	15.82%
Schlumberger	

Pharma (USD)	Coupon p.a.
Gilead Sciences	
Merck & Co (US)	6.16%
Pfizer	

## Sector heatmap (WoW returns)<sup>1,4</sup>

<b>Banks</b> 1.74%	<b>Oil&amp;Gas</b> 0.28%	<b>Insurance</b> 0.65%	<b>Biotechnology</b> -3.49%
<b>Pharmaceuticals</b> -1.41%	<b>Retail</b> 2.63%	<b>Semiconductors</b> 4.26%	<b>Financial Services</b> 1.00%
<b>Internet</b> 3.37%	<b>Telecommunication</b> -0.39%	<b>Mining</b> 2.55%	<b>Transportation</b> 2.96%
<b>Chemicals</b> 2.34%	<b>Auto Manufacturers</b> 4.44%	<b>Food</b> 0.98%	<b>Commercial Services</b> 3.67%

## Most simulated single underlyings and baskets on deritrade<sup>5</sup>

Underlyings <sup>1,2b</sup>	Coupon p.a.
DAX	1.95%
Infineon Technologies	8.87%
Bayer	6.71%
Volkswagen	10.23%
Richemont	4.84%
S&P 500	2.61%
Fresenius	4.77%
Vonovia	3.43%
BASF	5.57%
ams	15.06%
Zurich	1.68%
Commerzbank	10.35%
Novartis	0.46%
Tesla	19.06%
Credit Suisse	6.52%
BMW	6.39%
UBS Group	5.20%
AXA	5.30%
Amazon	4.82%
Dufry	13.07%
Zalando	11.56%

Basket 1 <sup>2a</sup> (CHF)	Coupon p.a.
SMI	
S&P 500	3.26%
Euro Stoxx 50	

Basket 2 <sup>2a</sup> (CHF)	Coupon p.a.
Nestlé	
Novartis	3.06%
Roche	

Basket 3 <sup>2a</sup> (CHF)	Coupon p.a.
Swiss Life	
Swiss Re	5.78%
Zurich	

Basket 4 <sup>2a</sup> (CHF)	Coupon p.a.
Amazon	
Google	7.75%
Microsoft	

<sup>1</sup> Universe: All underlyings within the deritrade universe.

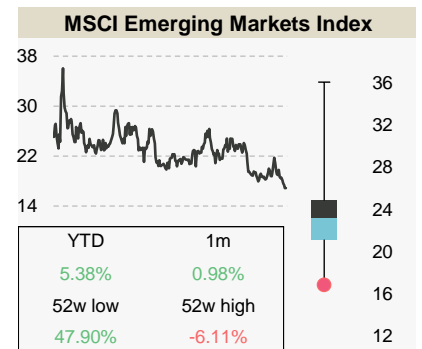
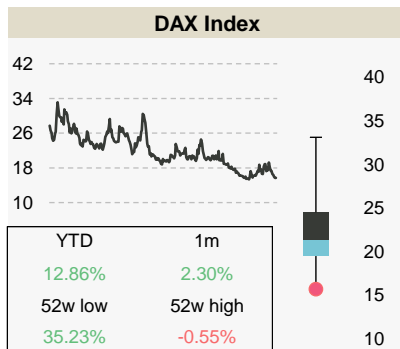
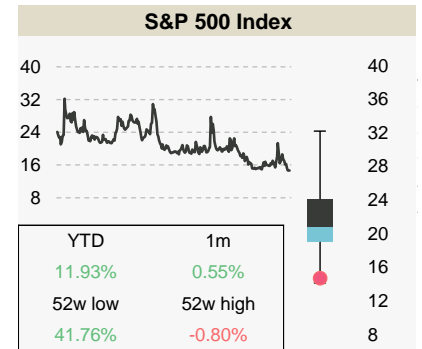
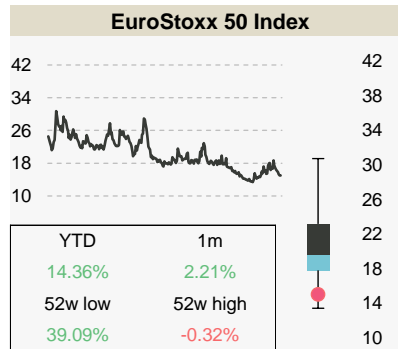
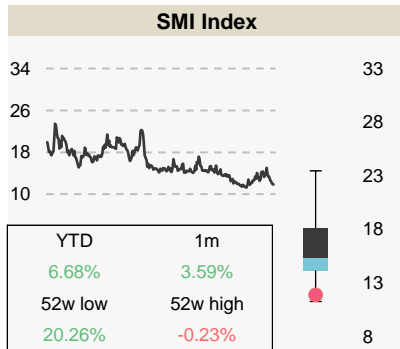
<sup>2a</sup> Structure: 1y Autocallable Multi Barrier Reverse Convertible (SSPA: 1230), quarterly AC first after 6 months, strike at 100%, continuous barrier at 70%, guaranteed coupon. Pricings as of 31.05.2021.

<sup>2b</sup> Structure: 1y Autocallable Barrier Reverse Convertible (SSPA: 1230), quarterly AC first after 3 months, strike at 100%, continuous barrier at 75%, guaranteed coupon, domestic ccy. Pricings as of 131.05.2021.

<sup>4</sup> Week over week return calculated on the closing prices as of 28 May 2021.

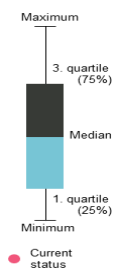
<sup>5</sup> Most simulated underlyings / Baskets on deritrade between 24 May 2021 and 28 May 2021.

## Index overview (3m imp. Vol)<sup>6,7,8</sup>



## Sample baskets<sup>2</sup>

Index Basket 1 (USD)	Coupon p.a.	Index Basket 2 (CHF)	Coupon p.a.
Euro Stoxx 50	4.38%	CAC 40	2.47%
Hang Seng		DAX	
S&P 500		FTSE MIB	



Calculations by Vontobel, source for stock information, implied volatility, dividends and returns: Bloomberg as of 31.05.2021. Note: Past performance is not a reliable indicator of future developments.

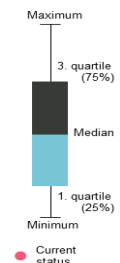
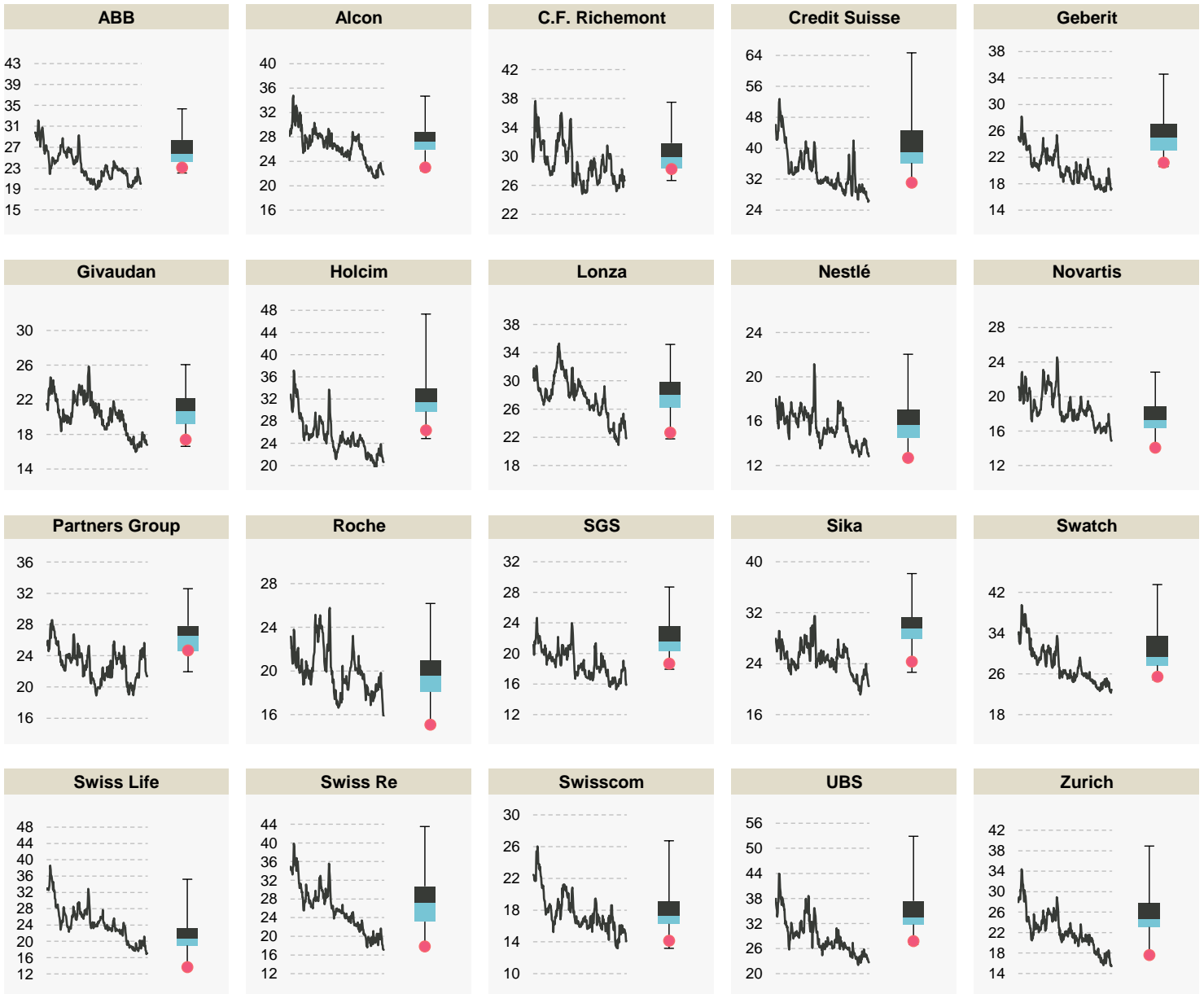
<sup>2</sup> Structure: 1y Autocallable Multi Barrier Reverse Convertible (SSPA: 1230), quarterly AC first after 6 months, strike at 100%, continuous barrier at 70%, guaranteed coupon. Pricings as of 31.05.2021.

<sup>6</sup> Volatilities as of period between 01.06.2020 and 31.05.2021.

<sup>7</sup> Boxplot calculations are based on a rolling 12 month observation of 3 month implied volatilities.

<sup>8</sup> Numbers in the boxes are referring to the performance of the underlying indices.

## SMI components (3 imp. Vol)<sup>6,7</sup>



<sup>6</sup> Volatilities as of period between 01.06.2020 and 31.05.2021.

<sup>7</sup> Boxplot calculations are based on a rolling 12 month observation of 3 month implied volatilities.

This publication is deemed to be marketing material within the meaning of Article 68 of the Swiss Financial Services Act and is provided for informational purposes only. We will be happy to provide you with additional information about the specified financial products, such as the prospectus or the basic information sheet, free of charge, at any time. This publication was produced by the Financial Products & Distribution organizational unit of our institute and is not the result of a financial analysis. The "Directives on the Independence of Financial Research" issued by the Swiss Bankers Association do not apply to the present publication. Contents of this publication originating from other Vontobel organizational units or third parties are cited as such. Performance achieved in the past may not be understood as an indication or guarantee of future performance. This publication and the financial products it presents are not intended for individuals subject to a place of jurisdiction that limits or prohibits the sale of financial products or the dissemination of this publication or the information contained therein. All information is provided without guarantee. This publication is solely for informational purposes, does not represent an investment recommendation or investment consulting, and does not contain an offer or a solicitation of an offer. It does not replace the qualified consultation necessary before any purchase decision, particularly with respect to all associated risks. Structured products are not considered collective total investments in the sense of the Swiss Federal Act on Collective Investment Schemes (CISA) and are thus not subject to the approval and oversight of the Swiss Financial Market Supervisory Authority FINMA. The recoverability of structured products may be dependent not only on the development of the underlying but also on the creditworthiness of the issuer. Investors are subject to the default risk of the issuer/guarantor.

May 2021 ©Bank Vontobel AG. All rights reserved

Bank Vontobel AG

Gotthardstrasse 43, 8022 Zürich  
Switzerland