

Weekly Equity Market Update

Highest coupon p.a.^{1,2b}

CH listed	Sector	Coupon p.a.(WoW) ³		
Dufry	Retail	12.87%	15%	
Aryzta	Food	12.28%	0%	
ams	Semiconductors	11.41%	-6%	
Temenos	Software	9.55%	8%	
Idorsia	Pharmaceuticals	9.09%	11%	
Logitech	Computers	7.95%	1%	
Adecco Group	Commercial Services	7.40%	11%	
Credit Suisse	Banks	6.59%	10%	
VAT Group	Metal Fabricate	6.07%	6%	
Richemont	Retail	5.89%	35%	
Vifor Pharma	Pharmaceuticals	5.54%	8%	
Julius Baer	Financial Services	5.47%	12%	
UBS Group	Banks	5.32%	24%	
Swatch	Retail	5.26%	7%	

Highest relative coupon change^{1,2b}

Company	Sector	Coupon p.a.(WoW) ³		
SGS	Commercial Services	0.36%	73%	
Givaudan	Chemicals	0.34%	70%	
EMS-Chemie Holding	Chemicals	2.09%	53%	
Schindler Holding	Hand/Machine Tools	2.27%	52%	
Richemont	Retail	5.89%	35%	
Clariant	Chemicals	3.32%	27%	
UBS Group	Banks	5.32%	24%	
Zurich Insurance	Insurance	2.21%	20%	
Swiss Life Holding	Insurance	2.81%	15%	
Dufry	Retail	12.87%	15%	
OC Oerlikon	Machinery-Diversified	4.17%	14%	
Partners Group	Financial Services	2.81%	13%	
LafargeHolcim	Building Materials	4.36%	13%	
Julius Baer	Financial Services	5.47%	12%	

EU listed	Sector	Coupon p.a.(WoW) ³		
K+S	Chemicals	15.80%	-2%	
Salzgitter	Iron/Steel	14.20%	11%	
thyssenkrupp	Iron/Steel	13.75%	7%	
ArcelorMittal	Iron/Steel	13.42%	10%	
ABN AMRO Group NV	Banks	11.79%	7%	
Deutsche Lufthansa	Airlines	11.60%	3%	
Societe Generale	Banks	11.45%	9%	
ProSiebenSat.1 Media SE	Media	11.19%	3%	
Rio Tinto	Mining	10.45%	18%	
Air France-KLM	Airlines	10.44%	2%	
Deutsche Bank	Banks	10.35%	4%	
ING Groep NV	Banks	10.35%	10%	
BNP Paribas	Banks	10.14%	6%	
Renault	Auto Manufacturers	10.03%	1%	

Company	Sector	Coupon p.a.(WoW) ³		
Vivendi	Media	3.52%	61%	
Danone	Food	1.80%	51%	
Beiersdorf	Cosmetics	1.73%	49%	
Pernod Ricard	Beverages	3.59%	41%	
E.ON SE	Electric	2.71%	35%	
Fresenius	Healthcare-Services	4.92%	34%	
AstraZeneca	Pharmaceuticals	2.20%	31%	
BASF SE	Chemicals	5.58%	29%	
AXA	Insurance	6.41%	28%	
Akzo Nobel NV	Chemicals	2.60%	26%	
Evonik Industries	Chemicals	5.74%	26%	
LVMH	Apparel	5.14%	26%	
RWE	Electric	5.65%	23%	
Bilfinger SE	Engineering	7.21%	23%	

US listed	Sector	Coupon p.a.(WoW) ³		
BlackBerry	Computers	28.30%	4%	
MACY'S	Retail	19.88%	7%	
Alcoa	Mining	19.49%	8%	
Devon Energy	Oil&Gas	19.21%	4%	
Tesla	Auto Manufacturers	18.34%	1%	
Snap	Internet	17.82%	3%	
Alibaba	Internet	17.49%	41%	
TripAdvisor	Internet	16.49%	6%	
Halliburton Co	Oil&Gas Services	15.50%	8%	
Baidu	Internet	15.28%	27%	
Freeport-McMoRan	Mining	15.28%	2%	
JD.com	Internet	14.76%	19%	
Schlumberger	Oil&Gas Services	13.76%	5%	
Biogen	Biotechnology	13.71%	16%	

Company	Sector	Coupon p.a.(WoW) ³		
Mondelez	Food	1.18%	67%	
Coca-Cola Co/The	Beverages	1.52%	65%	
Johnson & Johnson	Pharmaceuticals	1.57%	55%	
3M CO	Misc. Manufacturing	3.46%	50%	
Alibaba	Internet	17.49%	41%	
AT&T	Telecommunication	3.95%	37%	
McDonald's	Retail	2.25%	34%	
Pfizer	Pharmaceuticals	5.53%	32%	
Merck & Co	Pharmaceuticals	2.32%	30%	
Bristol-Myers Squibb Co	Pharmaceuticals	3.38%	29%	
Baidu	Internet	15.28%	27%	
Exxon Mobil	Oil&Gas	9.53%	26%	
Amgen	Biotechnology	4.46%	26%	
IBM	Computers	4.92%	26%	

¹ Universe: All underlyings within the deritrade universe.

^{2a} Structure: 1y Autocallable Multi BRC (SSPA Designation: 1230), quarterly AC first after 6 months, strike at 100%, continuous barrier at 70%, guaranteed coupon. Pricings as of 23.08.2021.

^{2b} Structure: 1y Autocallable BRC (SSPA Designation: 1230), quarterly AC first after 3 months, strike at 100%, continuous barrier at 75%, guaranteed coupon, domestic ccy. Pricings as of 23.08.2021.

³ Week over week coupon comparison / chart illustrates the historic coupon development since 12 July 2021.

Weekly returns⁴

CH largest movers	Ticker	WoW
VAT Group	VACN SE	5.01%
Lonza Group	LONN SE	4.90%
Kuehne + Nagel	KNIN SE	4.07%
ams	AMS SE	2.66%
Temenos	TEMN SE	2.58%
OC Oerlikon	OERL SE	-3.13%
Adecco Group	ADEN SE	-3.23%
Idorsia	IDIA SE	-3.72%
Richemont	CFR SE	-7.25%
Swatch	UHR SE	-7.39%

EU largest movers	Ticker	WoW
RWE	RWE GY	5.63%
Wacker Chemie	WCH GY	5.37%
United Internet	UTDI GY	4.06%
Merck KGaA	MRK GY	3.86%
Deutsche Post	DPW GY	3.66%
ArcelorMittal	MT NA	-6.96%
Salzgitter	SZG GY	-7.02%
LVMH	MC FP	-8.04%
Kering	KER FP	-10.35%
SSAB AB	SSABA SS	-10.74%

US largest movers	Ticker	WoW
MACY'S	M UN	18.34%
Netflix	NFLX UW	6.00%
UNITEDHEALTH GROUP	UNH UN	4.89%
Microsoft	MSFT UW	3.93%
NVIDIA	NVDA UW	3.11%
Apache	APA UN	-10.17%
Petroleo Brasileiro	PBR UN	-10.93%
Freeport-McMoRan	FCX UN	-13.91%
Alibaba	BABA UN	-16.25%
Alcoa	AA UN	-16.66%

Further Sample baskets^{2a}

Financial Services (CHF)	Coupon p.a.
UBS Group	
Julius Bär	9.45%
Partners Group	

Manufact. & Equip. (CHF)	Coupon p.a.
Logitech	
OC Oerlikon	12.09%
VAT Group	

Mixed (CHF)	Coupon p.a.
ABB	
Novartis	6.79%
LafargeHolcim	

Telecommunication (EUR)	Coupon p.a.
Orange	
Telefonica	8.84%
Vodafone	

Utilities (EUR)	Coupon p.a.
E.ON	
RWE	8.53%
ENGIE	

Insurance (EUR)	Coupon p.a.
Allianz	
Axa	8.06%
Zurich	

US Tech (USD)	Coupon p.a.
Amazon	
Apple	14.62%
Nvidia	

Oil and Natural Gas (USD)	Coupon p.a.
BP	
Halliburton	18.17%
Schlumberger	

Pharma (USD)	Coupon p.a.
Gilead Sciences	
Merck & Co (US)	9.71%
Pfizer	

Sector heatmap (WoW returns)^{1,4}

Banks -2.35%	Oil&Gas -5.66%	Insurance -0.07%	Biotechnology 0.35%
Pharmaceuticals 0.76%	Retail 0.10%	Semiconductors -0.64%	Financial Services -0.38%
Internet -2.86%	Telecommunication 0.05%	Mining -7.05%	Transportation 0.34%
Chemicals -0.87%	Auto Manufacturers -5.63%	Food -0.70%	Commercial Services -0.46%

Most simulated single underlyings and baskets on deritrade⁵

Underlyings ^{1,2b}	Coupon p.a.
Infineon Technologies	8.93%
Tesla	18.34%
Bayer	6.33%
Alibaba	17.49%
S&P 500	3.32%
DAX	1.91%
Logitech International	7.95%
Allianz SE	4.35%
SMI	0.00%
Volkswagen	7.78%
Dufry	12.87%
Richemont	5.89%
AXA	6.41%
Swatch Group	5.26%
Kering	6.40%
Daimler	9.25%
Amazon	5.20%
BASF SE	5.58%
Deutsche Post	3.73%
Airbus SE	8.25%
UBS Group	5.32%

Basket 1 ^{2a} (CHF)	Coupon p.a.
SMI	
S&P 500	4.06%
Euro Stoxx 50	

Basket 2 ^{2a} (CHF)	Coupon p.a.
Nestlé	
Novartis	2.43%
Roche	

Basket 3 ^{2a} (CHF)	Coupon p.a.
Swiss Life	
Swiss Re	5.93%
Zurich	

Basket 4 ^{2a} (CHF)	Coupon p.a.
Amazon	
Google	8.21%
Microsoft	

¹ Universe: All underlyings within the deritrade universe.

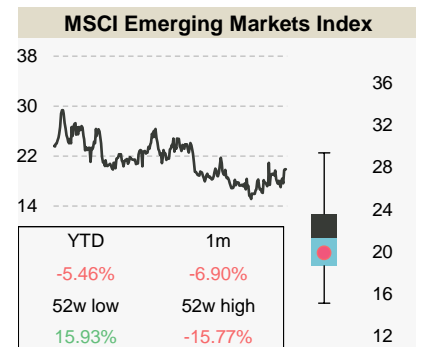
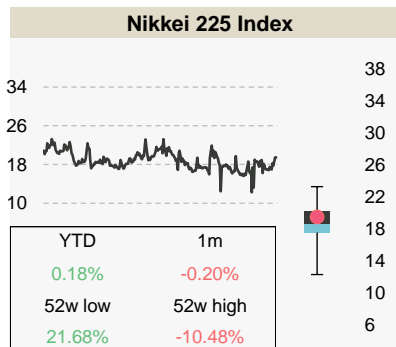
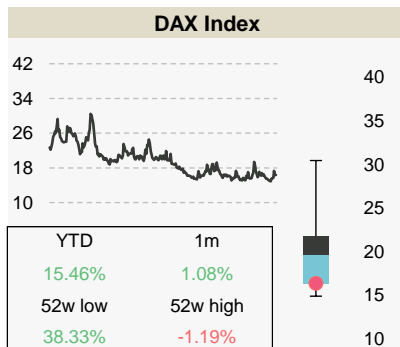
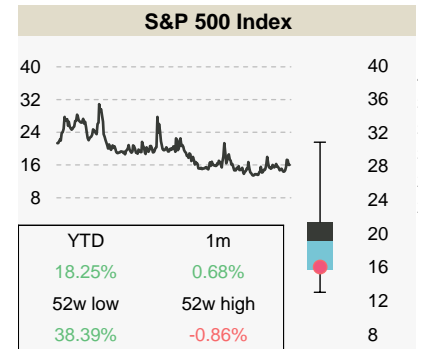
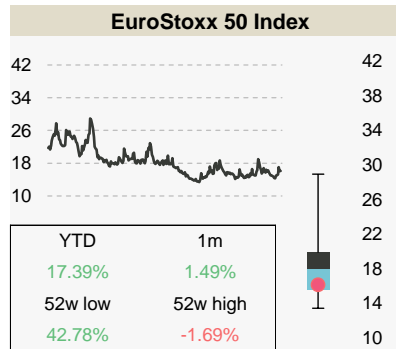
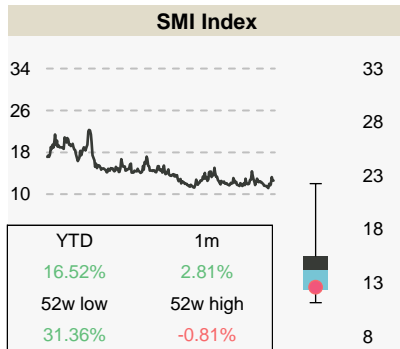
^{2a} Structure: 1y Autocallable Multi Barrier Reverse Convertible (SSPA: 1230), quarterly AC first after 6 months, strike at 100%, continuous barrier at 70%, guaranteed coupon. Pricings as of 23.08.2021.

^{2b} Structure: 1y Autocallable Barrier Reverse Convertible (SSPA: 1230), quarterly AC first after 3 months, strike at 100%, continuous barrier at 75%, guaranteed coupon, domestic ccy. Pricings as of 23.08.2021.

⁴ Week over week return calculated on the closing prices as of 20 August 2021.

⁵ Most simulated underlyings / Baskets on deritrade between 16 August 2021 and 20 August 2021.

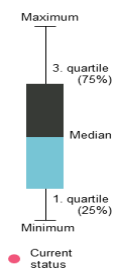
Index overview (3m imp. Vol)^{6,7,8}



Sample baskets²

Index Basket 1 (USD)	Coupon p.a.
Euro Stoxx 50	
Hang Seng	5.86%
S&P 500	

Index Basket 2 (CHF)	Coupon p.a.
CAC 40	
DAX	3.19%
FTSE MIB	



Calculations by Vontobel, source for stock information, implied volatility, dividends and returns: Bloomberg as of 23.08.2021. Note: Past performance is not a reliable indicator of future developments.

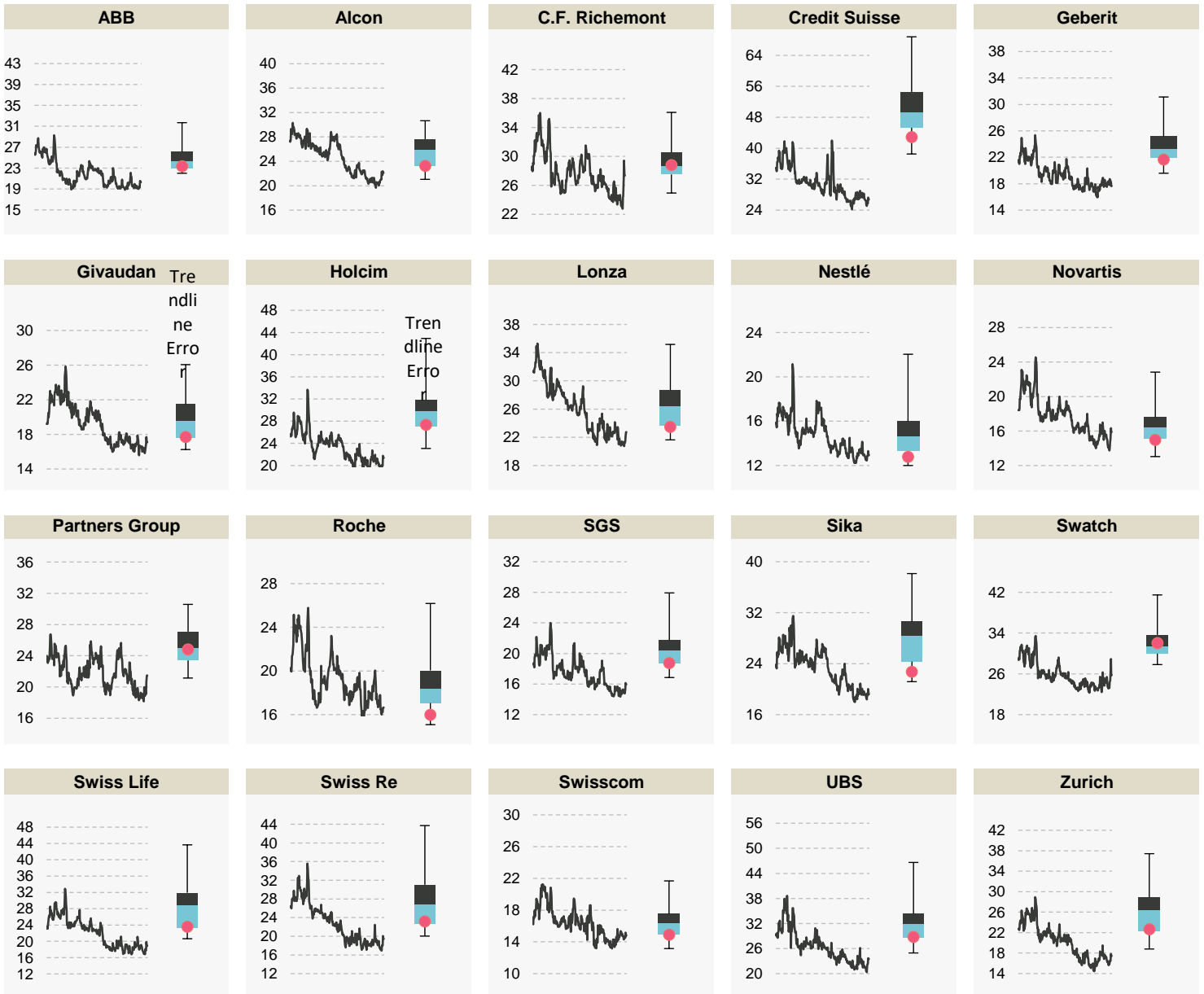
² Structure: 1y Autocallable Multi Barrier Reverse Convertible (SSPA: 1230), quarterly AC first after 6 months, strike at 100%, continuous barrier at 70%, guaranteed coupon. Pricings as of 23.08.2021.

⁶ Volatilities as of period between 24.08.2020 and 23.08.2021.

⁷ Boxplot calculations are based on a rolling 12 month observation of 3 month implied volatilities.

⁸ Numbers in the boxes are referring to the performance of the underlying indices.

SMI components (3 imp. Vol)^{6,7}



⁶ Volatilities as of period between 24.08.2020 and 23.08.2021.

⁷ Boxplot calculations are based on a rolling 12 month observation of 3 month implied volatilities.

This publication is deemed to be marketing material within the meaning of Article 68 of the Swiss Financial Services Act and is provided for informational purposes only. We will be happy to provide you with additional information about the specified financial products, such as the prospectus or the basic information sheet, free of charge, at any time. This publication was produced by the Financial Products & Distribution organizational unit of our institute and is not the result of a financial analysis. The "Directives on the Independence of Financial Research" issued by the Swiss Bankers Association do not apply to the present publication. Contents of this publication originating from other Vontobel organizational units or third parties are cited as such. Performance achieved in the past may not be understood as an indication or guarantee of future performance. This publication and the financial products it presents are not intended for individuals subject to a place of jurisdiction that limits or prohibits the sale of financial products or the dissemination of this publication or the information contained therein. All information is provided without guarantee. This publication is solely for informational purposes, does not represent an investment recommendation or investment consulting, and does not contain an offer or a solicitation of an offer. It does not replace the qualified consultation necessary before any purchase decision, particularly with respect to all associated risks. Structured products are not considered collective total investments in the sense of the Swiss Federal Act on Collective Investment Schemes (CISA) and are thus not subject to the approval and oversight of the Swiss Financial Market Supervisory Authority FINMA. The recoverability of structured products may be dependent not only on the development of the underlying but also on the creditworthiness of the issuer. Investors are subject to the default risk of the issuer/guarantor.

August 2021 ©Bank Vontobel AG. All rights reserved

Bank Vontobel AG

Gotthardstrasse 43, 8022 Zürich
Switzerland