

Weekly Equity Market Update

Highest coupon p.a.^{1,2b}

CH listed	Sector	Coupon p.a.(WoW) ³		
Dufry	Retail	17.80%	3%	
ams	Semiconductors	17.52%	6%	
Aryzta	Food	14.86%	-15%	
Logitech	Computers	11.24%	11%	
Credit Suisse	Banks	11.15%	14%	
Temenos	Software	11.00%	7%	
Vifor Pharma	Pharmaceuticals	10.53%	15%	
UBS Group	Banks	10.02%	7%	
Julius Baer	Financial Services	9.46%	20%	
Idorsia	Pharmaceuticals	8.99%	-4%	
Richemont	Retail	8.67%	16%	
Swiss Re	Insurance	8.60%	9%	
VAT Group	Metal Fabricate	8.38%	16%	
Adecco Group	Commercial Services	8.37%	10%	

Highest relative coupon change^{1,2b}

Company	Sector	Coupon p.a.(WoW) ³		
SGS	Commercial Services	3.26%	196%	
Schindler Holding	Hand/Machine Tools	1.98%	106%	
Partners Group	Financial Services	5.05%	52%	
Novartis	Pharmaceuticals	3.32%	48%	
Sonova Holding	Healthcare-Products	6.25%	37%	
Givaudan	Chemicals	3.14%	33%	
Kuehne + Nagel	Transportation	4.88%	33%	
Swiss Life Holding	Insurance	7.32%	32%	
Geberit	Building Materials	3.06%	31%	
Roche Holding	Pharmaceuticals	3.59%	31%	
Zurich Insurance	Insurance	6.82%	29%	
Clariant	Chemicals	4.26%	25%	
Lonza Group	Healthcare-Products	6.86%	22%	
Julius Baer	Financial Services	9.46%	20%	

EU listed	Sector	Coupon p.a.(WoW) ³		
Deutsche Lufthansa	Airlines	19.96%	10%	
Air France-KLM	Airlines	18.98%	2%	
Nokia OYJ	Telecommunication	18.32%	58%	
thyssenkrupp	Iron/Steel	18.28%	0%	
K+S	Chemicals	17.73%	12%	
ArcelorMittal	Iron/Steel	17.55%	5%	
Commerzbank	Banks	16.73%	18%	
Societe Generale	Banks	16.46%	11%	
Vallourec	Metal Fabricate	15.90%	0%	
Renault	Auto Manufacturers	15.75%	7%	
Repsol	Oil&Gas	15.48%	8%	
Bilfinger SE	Engineering	15.16%	-1%	
ProSiebenSat.1 Media SE	Media	15.10%	-5%	
Deutsche Bank	Banks	14.65%	8%	

Company	Sector	Coupon p.a.(WoW) ³		
Generali	Insurance	7.30%	67%	
Koninklijke DSM NV	Chemicals	5.20%	62%	
Nordea Bank AB	Banks	5.54%	59%	
Nokia OYJ	Telecommunication	18.32%	58%	
Sanofi	Pharmaceuticals	5.78%	52%	
L'Oreal	Cosmetics	5.08%	50%	
Fresenius Medical Care	Healthcare-Services	6.81%	43%	
Carrefour	Food	8.68%	42%	
Danone	Food	6.29%	41%	
Ericsson	Telecommunication	10.24%	40%	
Evonik Industries	Chemicals	7.71%	38%	
Air Liquide	Chemicals	3.38%	37%	
Cie de Saint-Gobain	Building Materials	10.87%	37%	
Schneider Electric SE	Electrical Components	8.89%	36%	

US listed	Sector	Coupon p.a.(WoW) ³		
Tesla	Auto Manufacturers	26.66%	13%	
Devon Energy	Oil&Gas	23.75%	6%	
Snap	Internet	22.93%	11%	
Alcoa	Mining	22.40%	9%	
TripAdvisor	Internet	21.35%	9%	
Twitter	Internet	21.33%	14%	
MACY'S	Retail	21.30%	-2%	
BlackBerry	Computers	21.23%	-3%	
Baidu	Internet	19.90%	-1%	
Freeport-McMoRan	Mining	19.66%	4%	
Spotify	Internet	19.10%	16%	
Halliburton Co	Oil&Gas Services	18.76%	2%	
Schlumberger	Oil&Gas Services	18.48%	19%	
HESS	Oil&Gas	18.35%	8%	

Company	Sector	Coupon p.a.(WoW) ³		
Procter & Gamble	Cosmetics	3.99%	90%	
Merck & Co	Pharmaceuticals	6.19%	77%	
Walmart	Retail	6.85%	73%	
McDonald's	Retail	6.54%	54%	
Mondelez	Food	5.77%	51%	
Visa	Financial Services	8.48%	47%	
ABBVIE	Pharmaceuticals	8.68%	42%	
Amgen	Biotechnology	8.23%	40%	
Johnson & Johnson	Pharmaceuticals	6.32%	39%	
CVS HEALTH	Pharmaceuticals	8.74%	36%	
Microsoft	Software	9.72%	33%	
Alphabet	Internet	10.11%	33%	
Starbucks	Retail	8.42%	33%	
JPMorgan Chase & Co	Banks	10.31%	33%	

¹ Universe: All underlyings within the deritrade universe.

^{2a} Structure: 1y Autocallable Multi BRC (SSPA Designation: 1230), quarterly AC first after 6 months, strike at 100%, continuous barrier at 70%, guaranteed coupon. Pricings as of 01.02.2021.

^{2b} Structure: 1y Autocallable BRC (SSPA Designation: 1230), quarterly AC first after 3 months, strike at 100%, continuous barrier at 75%, guaranteed coupon, domestic ccy. Pricings as of 01.02.2021.

³ Week over week coupon comparison / chart illustrates the historic coupon development since 29 December 2020.

Weekly returns⁴

CH largest movers	Ticker	WoW
ams	AMS SE	9.19%
Dufry	DUFN SE	7.61%
Swatch	UHR SE	3.95%
Temenos	TEMN SE	3.75%
EMS-Chemie Holding	EMSN SE	2.59%
Julius Baer	BAER SE	-3.84%
Aryzta	ARYN SE	-4.79%
Idorsia	IDIA SE	-4.83%
Novartis	NOVN SE	-5.54%
Lonza Group	LONN SE	-6.32%

EU largest movers	Ticker	WoW
Deutsche Lufthansa	LHA GY	11.04%
Vallourec	VK FP	10.31%
ProSiebenSat.1 Media SE	PSM GY	10.01%
ABN AMRO Group NV	ABN NA	9.83%
HUGO BOSS	BOSS GY	8.40%
Zalando SE	ZAL GY	-4.40%
Lundin Petroleum AB	LUPE SS	#VALUE!
Carrefour	CA FP	-5.03%
AstraZeneca	AZN LN	-5.22%
Fresenius Medical Care	FME GY	-6.47%

US largest movers	Ticker	WoW
MACY'S	M UN	16.77%
Twitter	TWTR UN	5.14%
Biogen	BIIB UW	4.89%
3M CO	MMM UN	3.92%
AMD	AMD UQ	-7.71%
Schlumberger	SLB UN	-9.01%
MORGAN STANLEY	MS UN	-9.55%
HESS	HES UN	-9.93%
Freeport-McMoRan	FCX UN	-11.74%
Apache	APA UN	-12.77%

Further Sample baskets^{2a}

Financial Services (CHF)	Coupon p.a.
UBS Group	
Julius Bär	12.46%
Partners Group	

Manufact. & Equip. (CHF)	Coupon p.a.
Logitech	
OC Oerlikon	13.98%
VAT Group	

Mixed (CHF)	Coupon p.a.
ABB	
Novartis	9.77%
LafargeHolcim	

Telecommunication (EUR)	Coupon p.a.
Orange	
Telefonica	13.43%
Vodafone	

Utilities (EUR)	Coupon p.a.
E.ON	
RWE	14.69%
ENGIE	

Insurance (EUR)	Coupon p.a.
Allianz	
Axa	11.92%
Zurich	

US Tech (USD)	Coupon p.a.
Amazon	
Apple	20.11%
Nvidia	

Oil and Natural Gas (USD)	Coupon p.a.
BP	
Halliburton	21.28%
Schlumberger	

Pharma (USD)	Coupon p.a.
Gilead Sciences	
Merck & Co (US)	10.73%
Pfizer	

Sector heatmap (WoW returns)^{1, 4}

Banks -1.60%	Oil&Gas -5.10%	Insurance -1.04%	Biotechnology -0.16%
Pharmaceuticals -3.89%	Retail 1.22%	Semiconductors -2.21%	Financial Services -3.01%
Internet -3.42%	Telecommunication 0.45%	Mining -3.67%	Transportation -3.39%
Chemicals 1.09%	Auto Manufacturers -2.25%	Food -1.56%	Commercial Services -1.80%

Most simulated single underlyings and baskets on deritrade⁵

Underlyings ^{1,2b}	Coupon p.a.
Deutsche Boerse AG Ger	4.64%
Tesla	23.49%
Nokia	11.60%
Deutsche Lufthansa	18.18%
Logitech	10.10%
Bayer	12.15%
S&P 500	5.34%
Volkswagen	11.43%
Apple	11.88%
Roche	2.74%
SMI	1.37%
ams	16.54%
Swiss	7.86%
SAP	6.81%
TOTAL	11.66%
UBS	9.39%
Alibaba	14.55%
Societe Generale	14.77%
Intel	11.25%
Novartis	2.25%
Amazon	9.86%

Basket 1 ^{2a} (CHF)	Coupon p.a.
SMI	
S&P 500	7.29%
Euro Stoxx 50	

Basket 2 ^{2a} (CHF)	Coupon p.a.
Nestlé	
Novartis	5.22%
Roche	

Basket 3 ^{2a} (CHF)	Coupon p.a.
Amazon	
Apple	17.04%
Microsoft	

Basket 4 ^{2a} (CHF)	Coupon p.a.
Swiss Life	
Swiss Re	10.08%
Zurich	

¹ Universe: All underlyings within the deritrade universe.

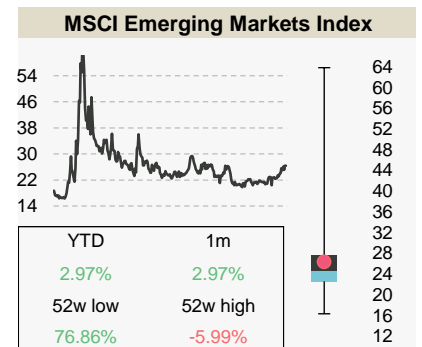
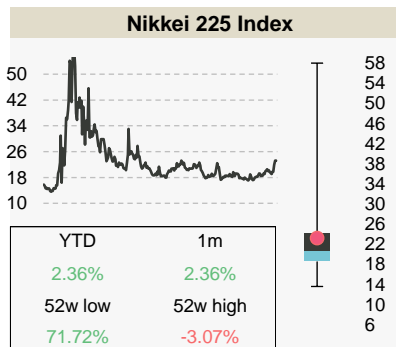
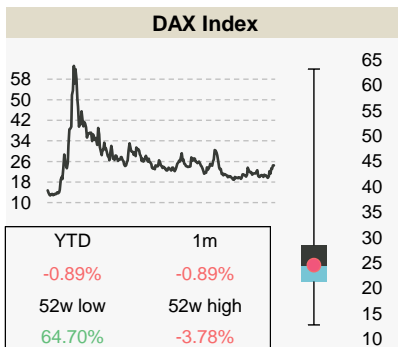
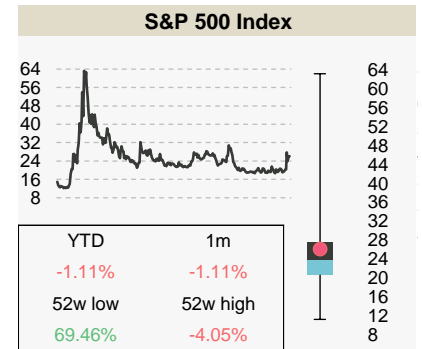
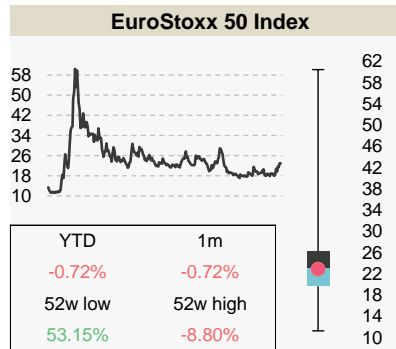
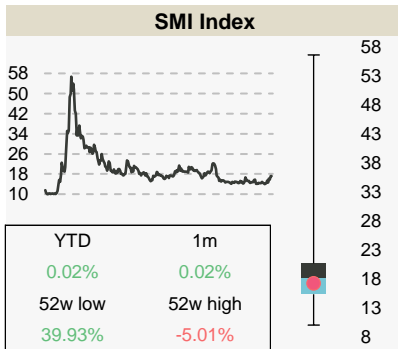
^{2a} Structure: 1y Autocallable Multi Barrier Reverse Convertible (SSPA: 1230), quarterly AC first after 6 months, strike at 100%, continuous barrier at 70%, guaranteed coupon. Pricings as of 01.02.2021.

^{2b} Structure: 1y Autocallable Barrier Reverse Convertible (SSPA: 1230), quarterly AC first after 3 months, strike at 100%, continuous barrier at 75%, guaranteed coupon, domestic ccy. Pricings as of 01.02.2021.

⁴ Week over week return calculated on the closing prices as of 29 January 2021.

⁵ Most simulated underlyings / Baskets on deritrade between 25 January 2021 and 29 January 2021.

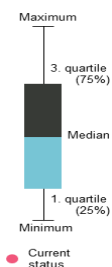
Index overview (3m imp. Vol)^{6,7,8}



Sample baskets²

Index Basket 1 (USD)	Coupon p.a.
Euro Stoxx 50	
Hang Seng	8.15%
S&P 500	

Index Basket 2 (CHF)	Coupon p.a.
CAC 40	
DAX	6.44%
FTSE MIB	



Calculations by Vontobel, source for stock information, implied volatility, dividends and returns: Bloomberg as of 01.02.2021. Note: Past performance is not a reliable indicator of future developments.

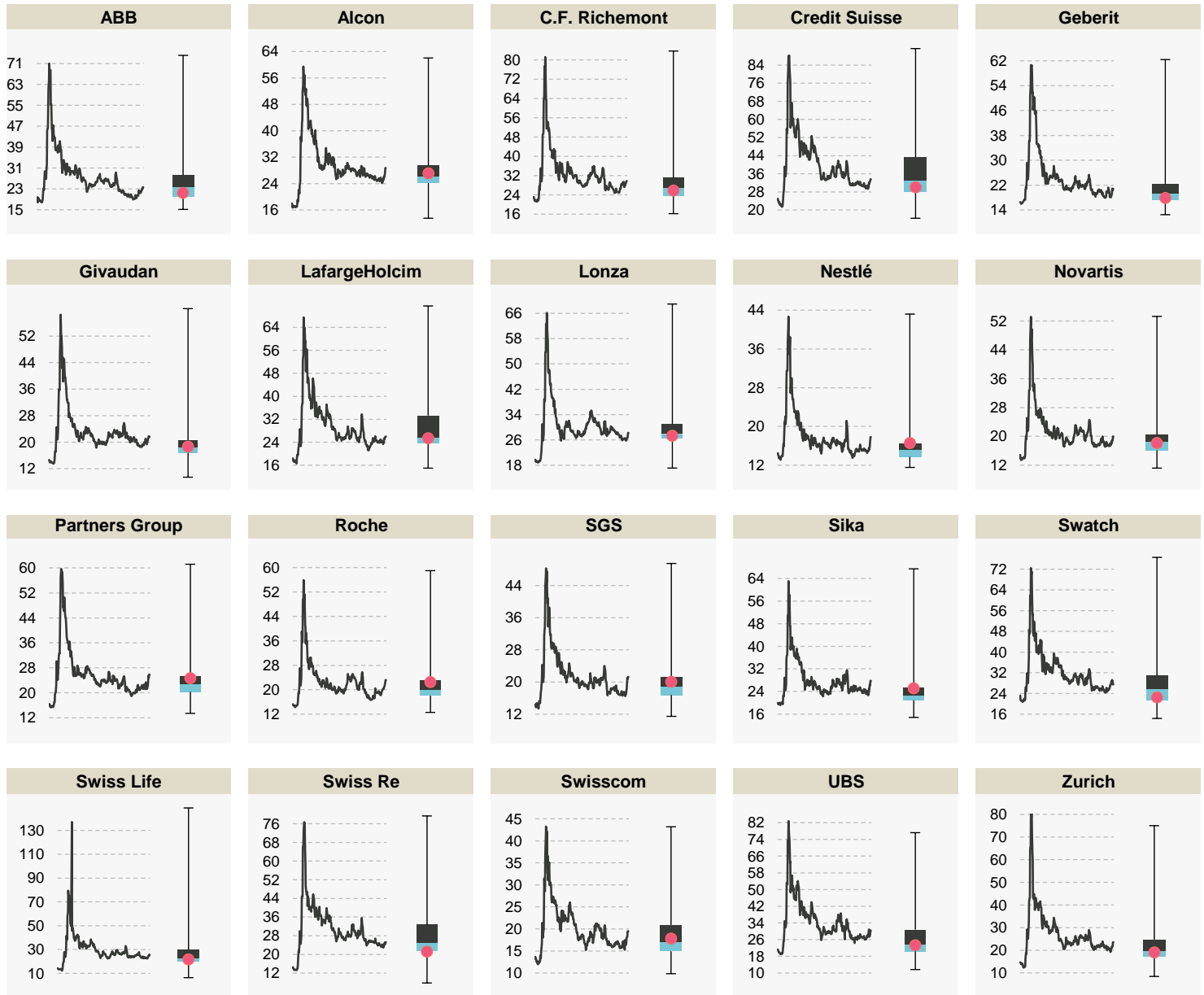
² Structure: 1y Autocallable Multi Barrier Reverse Convertible (SSPA: 1230), quarterly AC first after 6 months, strike at 100%, continuous barrier at 70%, guaranteed coupon. Pricings as of 01.02.2021.

⁶ Volatilities as of period between 03.02.2020 and 01.02.2021.

⁷ Boxplot calculations are based on a rolling 12 month observation of 3 month implied volatilities.

⁸ Numbers in the boxes are referring to the performance of the underlying indices.

SMI components (3 imp. Vol)^{6,7}



⁶ Volatilities as of period between 03.02.2020 and 01.02.2021.

⁷ Boxplot calculations are based on a rolling 12 month observation of 3 month implied volatilities.

This publication is deemed to be marketing material within the meaning of Article 68 of the Swiss Financial Services Act and is provided for informational purposes only. We will be happy to provide you with additional information about the specified financial products, such as the prospectus or the basic information sheet, free of charge, at any time. This publication was produced by the Financial Products & Distribution organizational unit of our institute and is not the result of a financial analysis. The "Directives on the Independence of Financial Research" issued by the Swiss Bankers Association do not apply to the present publication. Contents of this publication originating from other Vontobel organizational units or third parties are cited as such. Performance achieved in the past may not be understood as an indication or guarantee of future performance. This publication and the financial products it presents are not intended for individuals subject to a place of jurisdiction that limits or prohibits the sale of financial products or the dissemination of this publication or the information contained therein. All information is provided without guarantee. This publication is solely for informational purposes, does not represent an investment recommendation or investment consulting, and does not contain an offer or a solicitation of an offer. It does not replace the qualified consultation necessary before any purchase decision, particularly with respect to all associated risks. Structured products are not considered collective total investments in the sense of the Swiss Federal Act on Collective Investment Schemes (CISA) and are thus not subject to the approval and oversight of the Swiss Financial Market Supervisory Authority FINMA. The recoverability of structured products may be dependent not only on the development of the underlying but also on the creditworthiness of the issuer. Investors are subject to the default risk of the issuer/guarantor.

February 2021 ©Bank Vontobel AG. All rights reserved

Bank Vontobel AG
Gotthardstrasse 43, 8022 Zürich
Switzerland