

# Weekly Equity Market Update

## Highest coupon p.a.<sup>1,2b</sup>

CH listed	Sector	Coupon p.a.(WoW) <sup>3</sup>		
ams	Semiconductors	14.53%	-7%	
Dufry	Retail	14.23%	2%	
Aryzta	Food	12.20%	-4%	
Temenos	Software	8.80%	-2%	
Credit Suisse	Banks	7.94%	-11%	
Vifor Pharma	Pharmaceuticals	7.73%	3%	
Logitech	Computers	7.58%	0%	
Julius Baer	Financial Services	6.48%	14%	
Idorsia	Pharmaceuticals	6.18%	-7%	
VAT Group	Metal Fabricate	5.97%	-6%	
Swatch	Retail	5.48%	-10%	
Richemont	Retail	5.38%	-3%	
Basilea Pharmaceutica	Biotechnology	5.36%	-9%	
UBS Group	Banks	5.36%	1%	

## Highest relative coupon change<sup>1,2b</sup>

Company	Sector	Coupon p.a.(WoW) <sup>3</sup>		
OC Oerlikon	Machinery-Diversified	3.12%	107%	
EMS-Chemie Holding	Chemicals	1.31%	98%	
Schindler Holding	Hand/Machine Tools	1.98%	82%	
Lonza Group	Healthcare-Products	4.04%	18%	
Julius Baer	Financial Services	6.48%	14%	
Straumann	Healthcare-Products	3.13%	14%	
SGS	Commercial Services	0.53%	13%	
Adecco Group	Commercial Services	4.75%	11%	
Swiss Re	Insurance	3.69%	9%	
Sonova Holding	Healthcare-Products	3.68%	8%	
Partners Group	Financial Services	4.89%	7%	
Clariant	Chemicals	4.60%	5%	
Vifor Pharma	Pharmaceuticals	7.73%	3%	
Dufry	Retail	14.23%	2%	

EU listed	Sector	Coupon p.a.(WoW) <sup>3</sup>		
thyssenkrupp	Iron/Steel	16.16%	-1%	
Vallourec	Metal Fabricate	15.94%	-2%	
Air France-KLM	Airlines	14.86%	-13%	
ArcelorMittal	Iron/Steel	14.37%	-4%	
Electricite de France	Electric	14.29%	0%	
Deutsche Lufthansa	Airlines	13.44%	1%	
VALEO	Auto Parts	11.86%	1%	
Salzgitter	Iron/Steel	11.72%	1%	
Commerzbank	Banks	11.66%	4%	
ProSiebenSat.1 Media SE	Media	11.61%	-2%	
K+S	Chemicals	11.58%	-5%	
ING Groep NV	Banks	10.92%	1%	
Glencore	Mining	10.61%	4%	
Societe Generale	Banks	10.57%	-5%	

Company	Sector	Coupon p.a.(WoW) <sup>3</sup>		
Nokia OYJ	Telecommunication	7.93%	78%	
Vonovia SE	Real Estate	3.04%	42%	
Muenchener Rueck	Insurance	3.97%	26%	
Beiersdorf	Cosmetics	1.22%	23%	
Unilever NV	Cosmetics	1.50%	15%	
L'Oreal	Cosmetics	1.32%	13%	
Henkel	Household Products	1.89%	13%	
Merck KGaA	Pharmaceuticals	2.62%	12%	
Deutsche Telekom	Telecommunication	1.33%	11%	
Nordea Bank AB	Banks	4.10%	11%	
Orange	Telecommunication	2.47%	7%	
BASF SE	Chemicals	4.26%	7%	
Rio Tinto	Mining	7.80%	7%	
Hennes & Mauritz AB	Retail	4.17%	7%	

US listed	Sector	Coupon p.a.(WoW) <sup>3</sup>		
BlackBerry	Computers	23.80%	-5%	
Tesla	Auto Manufacturers	21.70%	-1%	
Alcoa	Mining	17.98%	-2%	
MACY'S	Retail	17.95%	0%	
Snap	Internet	17.36%	-6%	
Devon Energy	Oil&Gas	17.14%	-4%	
TripAdvisor	Internet	16.95%	-7%	
Freeport-McMoRan	Mining	16.18%	4%	
Biogen	Biotechnology	15.84%	5%	
Halliburton Co	Oil&Gas Services	15.31%	0%	
Petroleo Brasileiro	Oil&Gas	15.23%	-2%	
Twitter	Internet	14.65%	-3%	
Spotify	Internet	13.83%	0%	
Teva	Pharmaceuticals	13.82%	4%	

Company	Sector	Coupon p.a.(WoW) <sup>3</sup>		
Mondelez	Food	2.08%	10%	
Netflix	Internet	9.05%	8%	
3M CO	Misc. Manufacturing	2.38%	6%	
Biogen	Biotechnology	15.84%	5%	
Adobe Systems	Software	6.93%	4%	
Teva	Pharmaceuticals	13.82%	4%	
Freeport-McMoRan	Mining	16.18%	4%	
Cisco Systems	Telecommunication	5.68%	3%	
United Parcel Service	Transportation	4.86%	3%	
Goldman Sachs	Banks	7.06%	2%	
Baidu	Internet	11.59%	2%	
CHIPOTLE MEXICAN GRILL	Retail	6.19%	1%	
Apple	Computers	6.73%	0%	
Caterpillar	Machinery	7.30%	0%	

<sup>1</sup> Universe: All underlyings within the deritrade universe.

<sup>2a</sup> Structure: 1y Autocallable Multi BRC (SSPA Designation: 1230), quarterly AC first after 6 months, strike at 100%, continuous barrier at 70%, guaranteed coupon. Pricings as of 10.05.2021.

<sup>2b</sup> Structure: 1y Autocallable BRC (SSPA Designation: 1230), quarterly AC first after 3 months, strike at 100%, continuous barrier at 75%, guaranteed coupon, domestic ccy. Pricings as of 10.05.2021.

<sup>3</sup> Week over week coupon comparison / chart illustrates the historic coupon development since 29 March 2021.

## Weekly returns<sup>4</sup>

CH largest movers	Ticker	WoW
ams	AMS SE	15.66%
Straumann	STMN SE	4.06%
Clariant	CLN SE	4.02%
Geberit	GEBN SE	3.97%
Swatch	UHR SE	3.90%
Lonza Group	LONN SE	-3.15%
Temenos	TEMN SE	-3.67%
Credit Suisse	CSGN SE	-4.24%
Vifor Pharma	VIFN SE	-4.97%
OC Oerlikon	OERL SE	-5.00%

EU largest movers	Ticker	WoW
Vallourec	VK FP	16.18%
Glencore	GLEN LN	11.77%
ArcelorMittal	MT NA	11.58%
HUGO BOSS	BOSS GY	11.32%
Rio Tinto	RIO LN	11.01%
Infineon	IFX GY	-4.74%
HOCHTIEF	HOT GY	-7.03%
Vonovia SE	VNA GY	-7.42%
Telecom Italia	TIT IM	-7.93%
Bilfinger SE	GBF GY	-9.90%

US largest movers	Ticker	WoW
Schlumberger	SLB UN	17.89%
Halliburton Co	HAL UN	17.33%
Freeport-McMoRan	FCX UN	16.60%
Alcoa	AA UN	12.45%
Devon Energy	DVN UN	12.15%
Tesla	TSLA UW	-5.23%
salesforce.com	CRM UN	-6.00%
TripAdvisor	TRIP UW	-6.28%
Baidu	BIDU UW	-8.93%
Snap	SNAP UN	-11.52%

## Further Sample baskets<sup>2a</sup>

Financial Services (CHF)	Coupon p.a.
UBS Group	
Julius Bär	10.44%
Partners Group	

Manufact. & Equip. (CHF)	Coupon p.a.
Logitech	
OC Oerlikon	11.43%
VAT Group	

Mixed (CHF)	Coupon p.a.
ABB	
Novartis	7.04%
LafargeHolcim	

Telecommunication (EUR)	Coupon p.a.
Orange	
Telefonica	8.50%
Vodafone	

Utilities (EUR)	Coupon p.a.
E.ON	
RWE	8.41%
ENGIE	

Insurance (EUR)	Coupon p.a.
Allianz	
Axa	5.46%
Zurich	

US Tech (USD)	Coupon p.a.
Amazon	
Apple	13.84%
Nvidia	

Oil and Natural Gas (USD)	Coupon p.a.
BP	
Halliburton	17.53%
Schlumberger	

Pharma (USD)	Coupon p.a.
Gilead Sciences	
Merck & Co (US)	6.89%
Pfizer	

## Sector heatmap (WoW returns)<sup>1, 4</sup>

Banks 3.30%	Oil&Gas 7.03%	Insurance 0.18%	Biotechnology 2.99%
Pharmaceuticals 1.11%	Retail 1.68%	Semiconductors 0.65%	Financial Services 0.43%
Internet -2.93%	Telecommunication 1.68%	Mining 9.78%	Transportation 4.75%
Chemicals 3.20%	Auto Manufacturers -0.06%	Food 1.14%	Commercial Services -1.11%

## Most simulated single underlyings and baskets on deritrade<sup>5</sup>

Underlyings <sup>1,2b</sup>	Coupon p.a.
Volkswagen	10.51%
S&P 500	2.97%
Daimler	9.17%
Apple	6.73%
adidas	6.50%
SMI	0.00%
ams	14.53%
Bayer	6.55%
Tesla	21.70%
Alibaba	10.55%
DAX	2.07%
Credit Suisse	7.94%
Infineon	9.51%
BMW	6.72%
Nestle	0.00%
NASDAQ 100	5.07%
Continental	0.00%
Swiss Re	3.69%
ASML	7.75%
Vifor Pharma	7.73%
Amazon	5.96%

Basket 1 <sup>2a</sup> (CHF)	Coupon p.a.
SMI	
S&P 500	3.48%
Euro Stoxx 50	

Basket 2 <sup>2a</sup> (CHF)	Coupon p.a.
Nestlé	
Novartis	3.52%
Roche	

Basket 3 <sup>2a</sup> (CHF)	Coupon p.a.
Swiss Life	
Swiss Re	5.68%
Zurich	

Basket 4 <sup>2a</sup> (CHF)	Coupon p.a.
Amazon	
Google	8.67%
Microsoft	

<sup>1</sup> Universe: All underlyings within the deritrade universe.

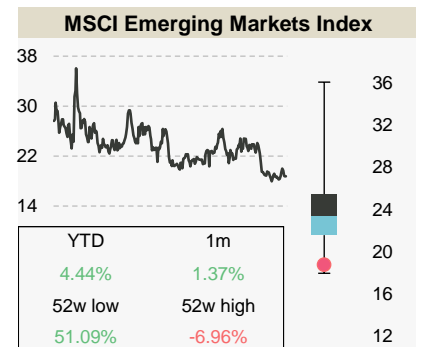
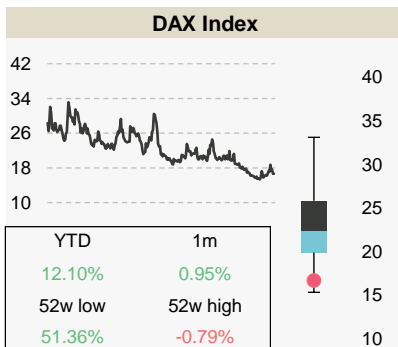
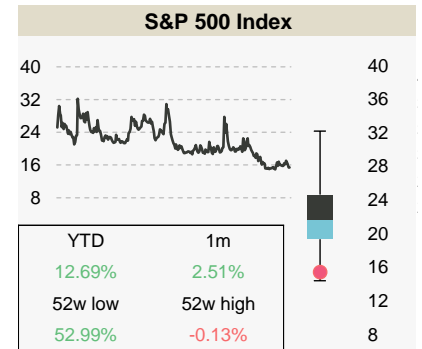
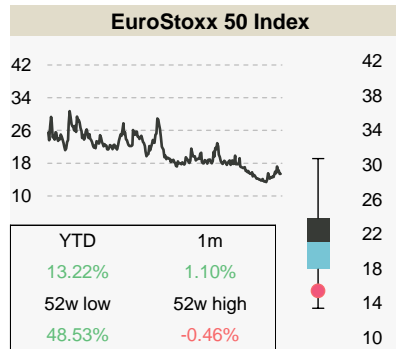
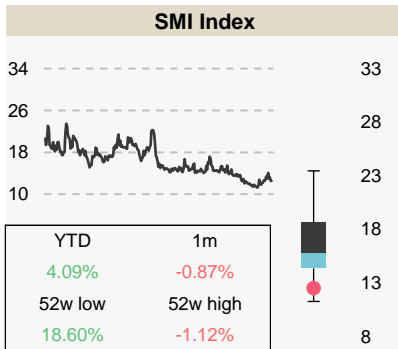
<sup>2a</sup> Structure: 1y Autocallable Multi Barrier Reverse Convertible (SSPA: 1230), quarterly AC first after 6 months, strike at 100%, continuous barrier at 70%, guaranteed coupon. Pricings as of 10.05.2021.

<sup>2b</sup> Structure: 1y Autocallable Barrier Reverse Convertible (SSPA: 1230), quarterly AC first after 3 months, strike at 100%, continuous barrier at 75%, guaranteed coupon, domestic ccy. Pricings as of 10.05.2021.

<sup>4</sup> Week over week return calculated on the closing prices as of 07 May 2021.

<sup>5</sup> Most simulated underlyings / Baskets on deritrade between 03 May 2021 and 07 May 2021.

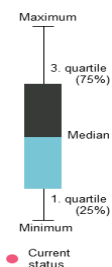
## Index overview (3m imp. Vol)<sup>6,7,8</sup>



## Sample baskets<sup>2</sup>

Index Basket 1 (USD)	Coupon p.a.
Euro Stoxx 50	
Hang Seng	4.40%
S&P 500	

Index Basket 2 (CHF)	Coupon p.a.
CAC 40	
DAX	2.67%
FTSE MIB	



Calculations by Vontobel, source for stock information, implied volatility, dividends and returns: Bloomberg as of 03.05.2021. Note: Past performance is not a reliable indicator of future developments.

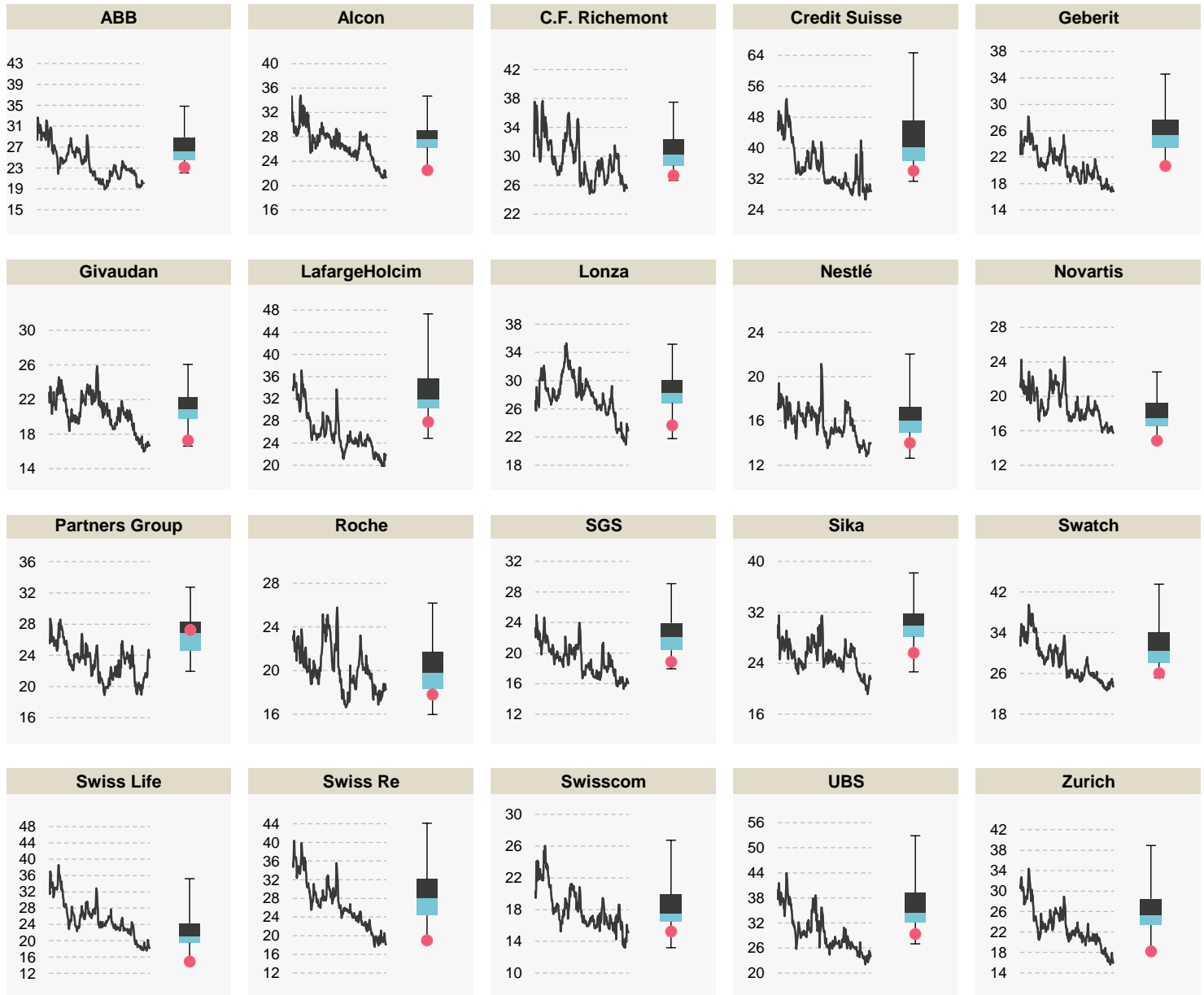
<sup>2</sup> Structure: 1y Autocallable Multi Barrier Reverse Convertible (SSPA: 1230), quarterly AC first after 6 months, strike at 100%, continuous barrier at 70%, guaranteed coupon. Pricings as of 10.05.2021.

<sup>6</sup> Volatilities as of period between 11.05.2020 and 10.05.2021.

<sup>7</sup> Boxplot calculations are based on a rolling 12 month observation of 3 month implied volatilities.

<sup>8</sup> Numbers in the boxes are referring to the performance of the underlying indices.

## SMI components (3 imp. Vol)<sup>6,7</sup>



<sup>6</sup> Volatilities as of period between 11.05.2020 and 10.05.2021.

<sup>7</sup> Boxplot calculations are based on a rolling 12 month observation of 3 month implied volatilities.

This publication is deemed to be marketing material within the meaning of Article 68 of the Swiss Financial Services Act and is provided for informational purposes only. We will be happy to provide you with additional information about the specified financial products, such as the prospectus or the basic information sheet, free of charge, at any time. This publication was produced by the Financial Products & Distribution organizational unit of our institute and is not the result of a financial analysis. The "Directives on the Independence of Financial Research" issued by the Swiss Bankers Association do not apply to the present publication. Contents of this publication originating from other Vontobel organizational units or third parties are cited as such. Performance achieved in the past may not be understood as an indication or guarantee of future performance. This publication and the financial products it presents are not intended for individuals subject to a place of jurisdiction that limits or prohibits the sale of financial products or the dissemination of this publication or the information contained therein. All information is provided without guarantee. This publication is solely for informational purposes, does not represent an investment recommendation or investment consulting, and does not contain an offer or a solicitation of an offer. It does not replace the qualified consultation necessary before any purchase decision, particularly with respect to all associated risks. Structured products are not considered collective total investments in the sense of the Swiss Federal Act on Collective Investment Schemes (CISA) and are thus not subject to the approval and oversight of the Swiss Financial Market Supervisory Authority FINMA. The recoverability of structured products may be dependent not only on the development of the underlying but also on the creditworthiness of the issuer. Investors are subject to the default risk of the issuer/guarantor.

May 2021 ©Bank Vontobel AG. All rights reserved

Bank Vontobel AG  
Gotthardstrasse 43, 8022 Zürich  
Switzerland